



2020 Impact Report



A Year of Opportunity

Our Mission

To lessen the impact of cancer on families.

Our Vision

A world where every mother with cancer receives the support she needs so she no longer has to choose between her own care and the care of her children. Where her children have the support of a specially trained volunteer to share their feelings in a healthy and safe environment to cope with the stress of this life change and build resiliency.



Our Values



Equity

We believe all mothers with cancer, regardless of race, religion, sexual orientation, or socioeconomic status, should receive the specialized childcare they need during their cancer journey.



Compassion

We know what a difficult time this is for a family. We are here to give hope and support to help make a difference and ease the burden of cancer on families.



Excellence

We have 30 years of screening experience, which means our volunteers are fully vetted and trained to provide the best care. Our Child Life Specialists build on this by developing customized programs for our families.



Innovation

We believe in innovating to respond to the changing needs of our families and community.



Accountability

We are accountable to all of our stakeholders: mothers, children, families, volunteers, community partners, funding partners and supporters. We are committed to evaluating our performance, measuring our impact, and improving our results.

Letter from Our Founder

Dear Friends,

When I reflect upon 2020, I am tremendously proud of the impact that we have had on so many families dealing with cancer in the midst of an unpredictable year. The pandemic gave us the opportunity to be innovative and create new programs to support moms with cancer during such an uncertain time. Our community roots grew stronger and deeper.

Our foundational Program for Children went virtual during the first COVID-19 lockdown and as an essential service to moms with cancer we resumed in-home care. We launched an online Homework Club to help kids keep up with their schoolwork. To keep summer bright, our Ronda Green Camp became a virtual experience with the launch of Camp-in-a-Box delivered to doorsteps. When immunocompromised moms expressed their concern and need for healthy and nutritious food, we listened, partnered with local caterers and delivered over 10,000 nutritious meals to high-risk families.

These new programs helped so many families, especially their children, cope with the complexities of cancer and the added stress of the pandemic. They are now a permanent part of the services we offer and were only able to grow because of your continued support.

On behalf of all the families that we support we thank you, with tremendous gratitude, for helping us thrive in the face of 2020.

Audrey Guth
Founder & Board Chair



Thriving in the face of adversity.

Board of Directors

Audrey Guth, Board Chair

Joyce Frustaglio, Vice Chair

Glen Mortimer, Treasurer

Samantha Cherry, Director

Azam Dawood, Director

Miriam Sweet Goldstein,
Director

Shauna Guth, Director

Nadia Headley, Director

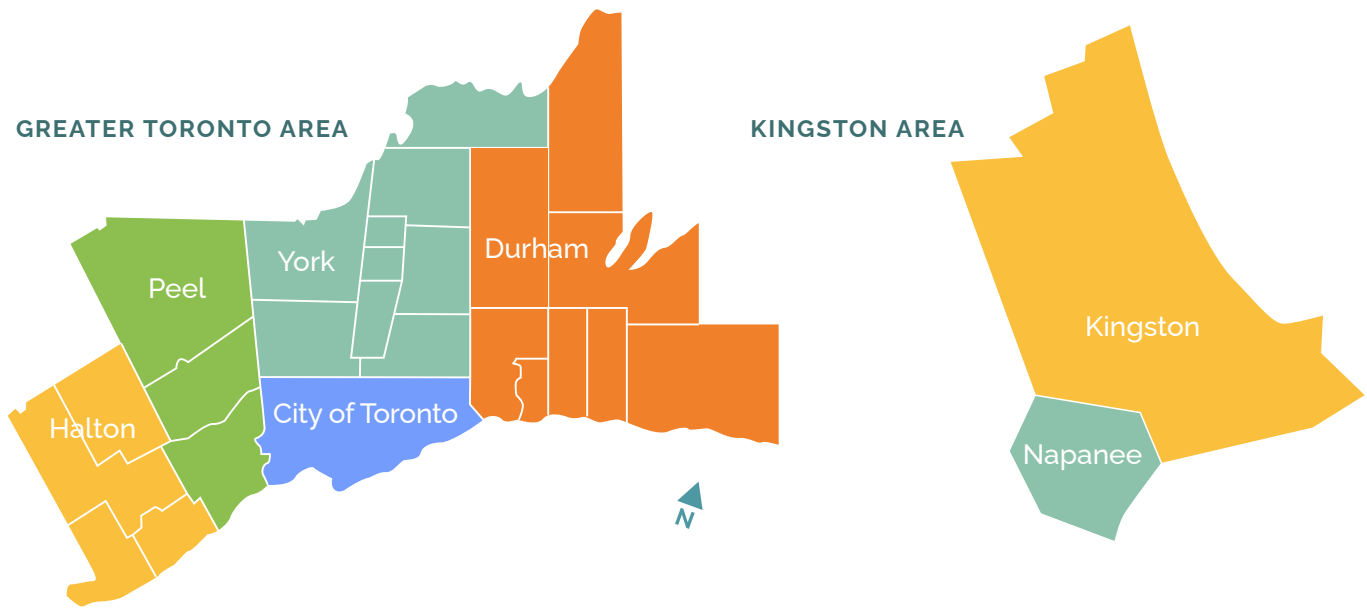
Gershon Hurwen, Director

Michael Kovendi, Director

Barbara Steinberg, Director

Our Community

We are inspired by our community of more than 150 passionate volunteers, countless supporters and deeply committed community partners. You are the reason we are able to further our mission of supporting moms with cancer and their children. In 2020, we grew stronger than ever.



We are proud to support families in 5 regions and 30 cities across the Greater Toronto and Kingston areas.

Ajax

Amherstview

Bolton

Bowmanville

Brampton

Brighton

East Garafraxa

East York

Etobicoke

Hamilton

Kingston

Little Britain

Markham

Mississauga

North York

Oakville

Oshawa

Pefferlaw

Pickering

Prince Edward County

Scarborough

Stouffville

Thornhill

Toronto

East York

North York

Whitby

Whitchurch-Stouffville

Woodbridge

Yarker

Our Impact

2020 was an incredibly impactful year. We supported 130 families in 30 cities across the GTA and Kingston area. Our response to COVID-19 was quick because we are committed to providing new and innovative programs that help our moms and their kids during these difficult times.



130+

FAMILIES SUPPORTED



200

KIDS ENGAGED



4

BRAND NEW PROGRAMS



200

COVID-19 KITS



10,000

NUTRITIOUS MEALS
DELIVERED



342

HOURS of VIRTUAL
HOMEWORK CLUB SUPPORT

Our Impact

To see and hear from one of our families in our network and their Nanny Angel, [click here](#).



5,000

HOURS of VOLUNTEER
PROGRAM SUPPORT



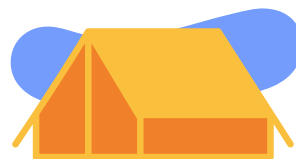
2,748

HOURS of NANNY ANGEL VISITS



600

CHILD LIFE INSPIRED
COPING KITS *for KIDS*



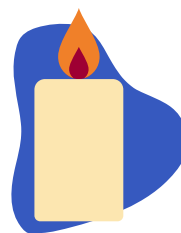
514

CAMP BOXES
DELIVERED



60

HOURS of CANCER GROUP
SUPPORT *for MOMS*



11

FAMILIES PROVIDED *with*
BEREAVEMENT SUPPORT

Plus countless virtual hugs!



Highlights

Here is a look at some of the milestones that we achieved throughout the year!

Launched a brand-new online training and learning management platform for volunteers.

Launched the NAN Playbook for Children, a standardized communication tool between families and volunteers, including a workbook for kids to learn about stress, coping tools and track what works best for them.

Developed a mindfulness program to support NAN staff.

Partnered with 4 university programs to provide 12 students in the medical and educational professions with placements.

Hosted our first Facebook Live on Talking to Kids about Cancer.

Presented NAN's Graduation Program at the International Child Life Conference, hosted by the Association of Child Life Professionals.

Presented to Astellas US Oncology team in Chicago as the 2019 winner, sharing how NAN fosters innovation in cancer care beyond medicine.

Our Programs

Building Resiliency

NAN's Program for Children is rooted in Child Life, a branch of psychosocial healthcare that helps children navigate stressful times so that they can better handle life changing experiences and ultimately thrive. As NAN's Child Life Specialist Cassandra Di Clemente explains, *"During a year filled with change, uncertainty, and grief, our NAN families turned to us to help provide relief and support. Child Life Specialists are uniquely trained to create activities that provide opportunities to express emotion and programs that enhance childhood development and maintain normalcy."* NAN's Certified Child Life Specialists develop customized programs through this lens for each family. Each activity is designed to help kids of all ages navigate the difficult journey of coping with a parent's cancer journey.

"The new programs we created this year, like Homework Club and Camp-in-a-Box, were so successful because they not only filled gaps in children's schedules during the pandemic, but they were also responsive to children's coping needs. Through the training and support offered to our volunteers, they learned how to recognize grief emotions and adapt activities so that children were well supported emotionally and developmentally."

When Nanny Angel volunteers engage with their kids, moms are given the time to rest, reassured that their children are learning how to build healthy coping skills through play. This gives them the tools to grow up to be healthy, well-adjusted adults.



Our Nanny Angel Network Program for Children became virtual during lockdown to ensure that we could support all of our families in need.

Our Programs

2020 was our most impactful year. We launched 4 new programs in response to COVID-19, bringing relief and support to all our families. Here's a look at some of the new and innovative programs we launched!

Virtual Homework Club

A virtual program that pairs our children with a homework buddy to guide and encourage, help them problem-solve, build routines and confidence.

Meal Support Program

To support immunocompromised moms at risk of exposure, we teamed up with 8 local caterers across the GTA and Kingston and provided families in need with healthy and delicious cooked meals.

Camp-in-a-Box

From slime kits to DIY camp crafts, NAN kids are engaged with a truckload of virtual fun. These therapeutic and fun activities provide kids with opportunities for expression and the chance to be just kids.

Weekly Virtual Cancer Support Group for Moms

Hosted by a registered nurse, this group provides a safe space for moms with cancer to share their experiences, ask questions and build supportive relationships.



One Mom's Journey

In October 2020, Stephanie, a young mom of two preschoolers, was diagnosed with Breast Cancer. As a former caregiver to her mom, who previously battled triple-negative breast cancer, Stephanie was all too familiar with the experience. Stephanie's disease spread rapidly and she needed to undergo an immediate double mastectomy surgery. Unfortunately, the surgery led to some complications that sent her to the emergency room. Life as she knew it changed forever.

"It was very difficult not being able to have any family with me due to pandemic restrictions. It was and still is a very challenging experience to go through alone during this time."

Stephanie missed little things like hugging her children close to her heart. The pandemic was already taking a toll on the family and the addition of her illness was scary and traumatic. Her husband and mom provided incredible help, but the love and support they get from Sally, their volunteer, has been the big hug they all needed.

Through it all, Stephanie has remained cheerful and optimistic. She frequently engages her kids to keep them busy and maintain a sense of normalcy. Things got even better when the Nanny Angel Network came along. Her kids had something new and exciting to participate in thanks to the new virtual programs offered, like Fun in a Box and Pre-school Playtime.

"With all the fatigue I'm experiencing from my cancer combined with the pandemic, it's been such a great help having support outside of the family. They love their time with Sally, our super amazing Nanny Angel volunteer and the activity boxes are filled with a variety of fun crafts that appeal to both my kids' interests."

Stephanie's biggest motivation to stay strong and positive has been her kids. Being able to spend quality time and plan fun activities has brought a lot of hope and happiness.

"It's an emotional rollercoaster, but eventually it will get smoother. I have learned that it's okay to reduce the pressures we impose on ourselves and rely on others for help."



From Our Moms

"No matter how many friends and family members you have that have shown tremendous support, Nanny Angels are skilled where family and friends aren't. You don't just get a volunteer, you get an amazing support system that's committed to making a difference in your life and more importantly, in your child's life." — Annalisa, NAN mom

"With all the fatigue I'm experiencing from my cancer combined with the pandemic, it's been such a great help having support outside of the family. They love their time with Sally, our super amazing Nanny Angel volunteer and the activity boxes are filled with a variety of fun crafts that appeal to both my kids' interests." — Stephanie, NAN mom

"Mothers are always seen as the backbone of the family. But we also need a helping hand every now and then. So, it is important we take advantage of the resources available to us and believe it is going to get better." — Vanessa, NAN mom



Our Volunteers

We are so grateful to the 150 volunteers who helped us provide support throughout 2020. Volunteers like Delaney are the heartbeat of NAN. Here's her story,

"I was placed with a most incredible family. I was always amazed by their upbeat attitude and positive response to such simple gestures as: a smile, an arts & craft session, a PJ party or just building a snowman together. While I felt I was making a difference as a Nanny Angel, I found that my time with this family had the added personal benefit of strengthening my heart and nourishing my soul."

Being a volunteer has allowed Delaney to follow her passion for guiding and supporting children, who often cannot fully comprehend the issues faced by families experiencing a parent with cancer, even more so during these trying times.

"To be able to add a little fun and excitement to their lives each week, seems to lift their burden of uncertainty. It warms my heart each time I see their smiles or frequent expressions of 'thank you' both verbal and implied."

For Delaney, volunteering with NAN is an experience that is as humbling as it is rewarding. *"My attempts to make a positive difference in the lives of mothers and their families, during these difficult times, are intended as a gift to them, but the reality is that I get back as much as I give."*



TO ALL OUR VOLUNTEERS

We could not help moms with cancer and their kids without your unwavering support. Thank you for all that you do!

Volunteer of the Year

The Nanny Angel Network Volunteer of the Year award recognizes one outstanding volunteer that has completed a minimum of 6 months/100 hours of hours served. A volunteer who has gone above and beyond in providing an on-going commitment to a family in need. Congratulations to *Dianna Harrison* for being our 2020 Volunteer of the Year!

Dianna was selected because of her incredible commitment to supporting a family that needed substantial help. She supported a single mom

and son with special needs, with no other family in Canada. Throughout the entire Covid-19 pandemic Dianna provided in-home support to the mom so she could attend her medical appointments, receive treatment, and recover from her surgery. Diana included this family into her bubble to ensure that the mom did not have to choose between childcare and her health. Diana's flexibility, compassion and willingness to meet her family whenever they needed support with no questions earned her the title as NAN's Volunteer of the Year!



Our Meal Program Partners

When the pandemic hit, we realized many immunocompromised moms feared exposure to the virus. So, we partnered with 8 local caterers across the GTA and Kingston area and launched our Meal Support Program! We were able to provide over 10,000 nutritious cooked meals to NAN families during the pandemic. With the recommendation of our Child Life Specialists, we continue to support our most at-risk families with meal support during the toughest part of their cancer journey.

Toben Food by Design

Yumba

Executive Nutrition (Kingston)

The Rampant Chef

On the Run Meals

On the Move Catering

Food for Thought (York Region)

City Farm Catering (Hamilton)



Lending a Helping Hand

"We feel very lucky to have been given the opportunity to cater to a number of Nanny Angel families this past year. It is a privilege to know that we are helping these families gain access to wholesome meals that may not have had the ability to do so safely during this time. Our hope was that it brought them just a little bit of joy and one less thing to worry about each day. Thank you, Nanny Angels, for allowing us to be a part of this initiative."

*With gratitude,
The TOBEN team*

"Interacting with the clients, receiving their thanks, and hearing first-hand about how Yumba's meals were helping to save precious time, effort, and energy was always uplifting. The Nanny Angel Network staff were always warm, friendly, and professional and always willing to work with us to find the best meal experience possible for their clients."

On behalf of the entire Yumba Team, I'd like to thank the Nanny Angel Network for providing us the opportunity to make a positive difference in the lives of families going through an ordeal words may not be fit to represent."

Travis, Yumba

Our Supporters

Waugh Family Foundation

The Waugh Family Foundation has been an important partner to NAN for the past three years. The Foundation is led by husband-and-wife Rick and Lynn Waugh, their three sons and three daughters-in-law Haley, Lisa, and Stacey, who have been the driving force behind the Foundation's support. It is from a deep understanding of what a family goes through when a parent gets cancer, that they became passionate about supporting the Nanny Angel Network.

As young mothers, Hayley, Stacey, and Lisa understand the amount of work it takes to be an attentive mom and how much time and effort goes into looking after the family.

For Hayley, a former event manager at the United Way and a mom of two, her thoughts revolve around a mom having to be a mom, no matter what,

"Even when you have a cold, it is very challenging to look after your family, so when you have cancer, it's even more difficult to keep the family in one piece. That is why I have such deep admiration for the work of the Nanny Angel Network. When I think about preparing meals and making sure everyone is happy, I'm especially impressed by a mom's ability to cope and how having a Nanny Angel provides a huge benefit."



Waugh Family Foundation

Stacey, a teacher and mother of three young children, reflects, *"It's hearing the mom's stories, how the Nanny Angel Network helps reduce the family's stress and how the programs developed during COVID kept families fed and brought joy from programs like the activity boxes. I find this all inspiring and it makes us want to help even more and be part of the mission."*

Lisa a busy stay at home mother with 3 young children: Charlotte, Jack, and Nathan (ages 5, 3.5 and 1.5) *"When I was first introduced to Nanny Angels, I was overwhelmed with emotion while reading the personal stories and learning just how impactful the organization is for these families in need. This past year has presented everyone with their own struggles. When you consider the support that the Nanny Angel Network has been able to provide, to both families and mothers, it is truly remarkable. The speed at which NAN pivoted during the pandemic is something that I really admire. The entire world was shaken upside down, yet NAN anticipated their families' greatest challenges and acted quickly by implementing a meal support program, homework club and activity boxes."*

Our hope for NAN in the next five years is for the organization to continue to support more families in Ontario and one day across Canada. I look forward to seeing how the Waugh Family Foundation's contribution will impact programming as the needs of these families continue to grow. We have such respect for the work NAN does and we are so honoured to be able to help support the organization and the families involved. "

The Waugh Family Foundation's tremendous support over the past 3 years has made an enormous difference in the lives of families the Nanny Angel Network supports across the GTA and Kingston. Thank you, Hayley, Lisa and Stacey and the entire Waugh Family Foundation, for your kindness, generosity and for working to make a difference in the lives of families living with cancer.



WAUGH FAMILY, CHRISTMAS 2019

Moms Supporting Moms

Giving Back, One Month at a Time

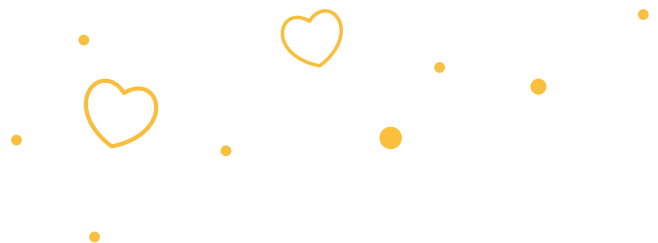
Stephanie is a loving wife, mother of two and long-time monthly donor. She learned about NAN in 2015 and as a working mother immediately understood the need for reliable childcare. What Stephanie did not realize, was how critical childcare support was for moms with cancer.

"As a mom, you are constantly thinking about ways or things you can do to make sure your kids are okay, and having that support to ensure that your children are emotionally and mentally healthy in an already difficult time is so important. I can't imagine having that additional stress of being worried about your kids during a time you should be focusing on your health."

Understanding the need for consistency and the importance of the extra support provided by Nanny Angels, Stephanie decided to become a monthly donor. *"I donate monthly to NAN because I know it can have a real long-term impact. I am helping to support the love, consistency and that extra special care during a tumultuous time for these families."*

Stephanie considers herself incredibly lucky to not have experienced cancer firsthand, but it has impacted her family. Her grandfather passed away from cancer 15 years ago and another family member is currently undergoing treatment. Seeing the pain this disease causes, she could not imagine going through that as a mom while trying to care for your children.

For moms with cancer, NAN provides more than just childcare. Volunteers provide a sense of normalcy to children during a very difficult time. Stephanie's heart feels full when she sees her monthly donation being made.



Financials

Thanks to the passion, dedication and generosity of so many, we saw incredible support and launched new programs in response to COVID-19. Every dollar raised helps support our mission to lessen the impact of cancer on families.

\$1,225,481

TOTAL REVENUE

581

TOTAL DONORS

650

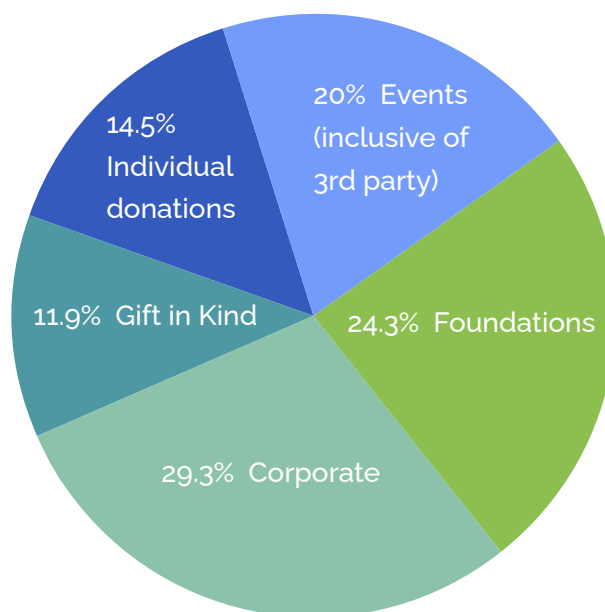
NUMBER OF GIFTS RECEIVED

\$898,870

TOTAL EXPENSES

2020 revenue

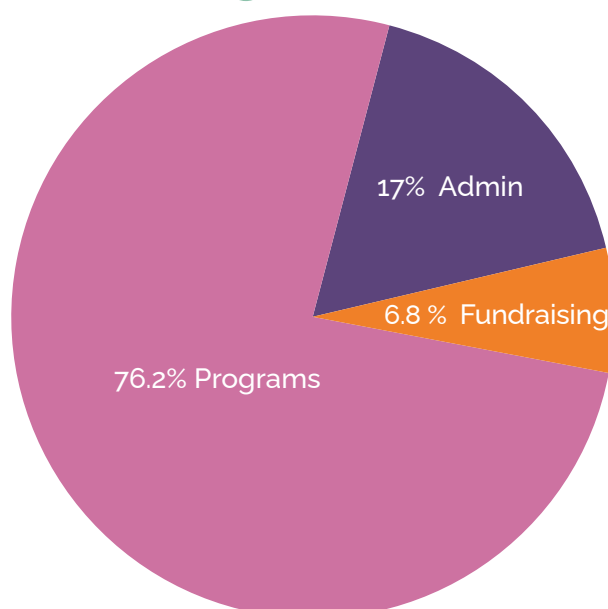
\$1,225,481



DECREASE OF -17%

2020 expenses

\$898,870



DECREASED EXPENSES BY -11%

Our Premiere 2020 Donors

It is because of the deep commitment of the following corporations and foundations that we are able to ensure all families living with cancer have the support they need. Thank you for being by our side.



LA FONDATION
EMMANUELLE
GATTUSO



ALFRED & CATHRYNE
HENDRY



AVID
APPAREL

BENJAMIN &
MAYA GUTH

THE
CATHERINE AND MAXWELL
MEIGHEN FOUNDATION



Guardian Angels

\$200,000 and Up

Basil Developments • Brampton Brick • La Fondation Emmanuelle Gattuso
Surplus Furniture & Mattress • Homestead Land Holdings Limited

2020 Donors

Hereos

\$100,000-\$200,000

Greenwin Corp.

La Fondation Emmanuelle
Gattuso

Homestead Land Holdings
Limited

Dream-Builders

\$25,000-\$99,999

Avid Apparel

Bazil Developments

Brampton Brick

CIBC Children's Foundation

The Waugh Family Foundation

Champions

\$10,000-\$24,999

Alfred & Cathryn Hendry

Argo Development
Corporation

Avid Apparel

Benjamin Guth & Mia Shulman

Catherine & Maxwell
Meighen Foundation

Ivari Canada

Minto Foundation Inc.

Ontario Realtors Care
Foundation

Prophix Software

Scotiabank

Telus Corporation

Partners

\$5,000-\$9,999

Barrick Gold Corporation

CIBC

David Yurman

F.K. Morrow Foundation

Frank Ieraci

Growing Tykes Learning
Center

iA Financial Group

J.P. Bickell Foundation

Katherine Pettypiece

M.E.H Foundation

Rexall Care Network

The Cadillac Fairview
Corporation Limited

The Charles Ivey Foundation

The Henry & Berenice
Kaufmann Foundation

Tradeworld Realty Inc.
Brokerage

Changemakers

\$1,000 - \$4,999

Agueci & Calabretta	Eva Dunford	Marion Greenberg
Alectra Utilities	Forest Contractors LTD.	Mazon Canada
All Professional Trades	Gerry Dileo	Nancy Troiani
Alpine Sodding & Landscaping	Gluskin Sheff and Associates Inc	NorthBridge Financial Corporation
Amy Hui	Goldrich Printpak Inc.	RBC Foundation
ANIX Developments	Groundswell Urban Planners Inc.	Rocco & Irene Pantalone Family Foundation
Anna & Edward C. Churchill Foundation	Helena Axler	Rock 'N Karma
Anna Albo	Hunt Design Associates	Seligman & Associates
Barb Steinberg	Hyde Park Ltd Partnership	Sparkle Solutions
Barbara Belford	Kaselle Beach	Stephanie E Roidi
Bell	Kelly Pronyx	Susan Gottlieb
Break Fast Club of Toronto	KMR BookKeeping.	The Georgina Foundation
Chris Giffin	Leah Werry	The McLean Foundation
Con-Drain Company (1983) Ltd	Lindsay Milne	The Regional Municipality of York
Conrad Ogniewicz Family Fund	Lisa Moen	Tony Lyew
David Gomez	LXR CANADA INC	Torch Beauty Treatments Limited
Delaine Hampton	Mackenzie Financial Charitable Foundation	Trisan Construction Ltd.
Delta Urban	Marc Hazout	Vault Mortgage Corporation
	Mari-Jayne Woodyatt	WoodHaven Country Lodge.

Advocates

\$500-\$999

Amy Lo	ETFO Toronto OT Local	Ivan Muchalov
Andrea Sarkozi	Fred & Audrey Guth	Jane Deighton
Anita and Leon Lapidus	Glen Mortimer	Jennifer Spear
Barbara Steinberg.	Goldrich Printpak Inc.	Jewish Foundation of Greater Toronto
Carolyn A Longo	Ideal Solutions Insurance	Jing Du
Elizabeth Harding	hoft home	

...continued

Linda Muzzo	Nancy and Arthur Ameis Charitable Fund	Susan Montemurro
Lucas Atkins	Rita Bertossio	The Coffey Family Foundation
Luisa Coletto	Robert Franklin	The Henry & Berenice Kaufmann Foundation
Mari-Jayne Woodyatt	Rowhena Rajaram	Toben Food by Design
Michael Freeman	Seligman & Associates	
Michael Smaye		

Cheerleaders

\$250 - \$499

Alison & Steven Green	Guy Weissberg	Pamela J Marshall
Andrea Waserman	Jaime Verk	Pearl Panthaky
Andree Blouin	Jewish Foundation of Greater Toronto	Richardson GMP Limited
Barbara Belford	Joan Totten	Rita Starkman
Bernice Leipziger	Jodie Louth Gray	Roy Fisher
Brian Cooke	Jonet Inc	Russell Weiss
Carole Title	Laura Gertsen	Ryan R White
Daniel Green-Leipziger	Lauren Ball	Samantha Cherry
Diane Orihel	Marjorie Mandel	Sandra G Feldstein
Frank Ieraci	Meghan MacPherson	Sarah Varley
Gary Feldman	Mercy Shu	Shannon Todd
George Khoury	Mobilize	Tazina Choudhury
Glen Mortimer	Nelle Lakien	United Way of Greater Toronto

Teammates

\$1 - \$249

403 of our pals gave at this level to give our angels wings

Gifts in Kind

Barberian Steak House

Curly Hair Solutions

Farro Ristorante

Jump+

McMichael Gallery

Piano Piano

Rocky Crest Golf Resort

Terra Restaurant

Ultimate Exotics

Dan Ackroyd

Air Canada Foundation

Paese Ristorante

Deerhurst Resort

Great Wolf Lodge

Harold Green Theatre

Microsoft

ET Canada

Hamмам Spa by Cela

Casa Loma Escape Games

Upper Unionville Golf Club

Watson's Glen Golf

Peninsula Lakes Golf Club

Copper Creek Golf Club

Miriam Sweet Goldstein

Accor Hotels

Jamie Verk



In Honour Of

Noah Radowitz

Daniel Green

Mrs F. Schaffel

Svetlana Korolitsky

Debbie Holtzberg

Esther Michaels

Callie R. Green

Nathan Leipziger

Kathy Cunningham

Kylie Cunningham

Paige Cunningham

Mussarat Ejaz

Christe Okonkwo-MacKenzie

G&J

Jen Kelsey

Hebert Jeffery

Nicholas Gannon

Fiona A Lindsay

Jessica Waks

Mary A. Longo

Carolyn Longo

Jeffrey Gray

Callie Olyan

Kathy Cunningham

Shane Cunningham Boles

Anita Shedletsky

Diana Shedletsky

Tracy Mohamed

Shankar Sivanander

Lexx Varghese

Royal LePage Burloak Real Estate Services

Brierley Group

Jesse Guth

Barbara Belford

The Birth of Baby Green

Janis Sugar

Saqib Qureshi

Podium Developments

Ruth Kerbel

Zarubin Singh

Elsie Robinson

Annette Robinson

Amy Spensieri

Jennifer Khan

Lawi Mohammed

Hiba Ismail

Gabriel Pakula

Tazina Choudhury

Chantal Millet

Brian Cooke

Linh's Mom

Derek Worchel

Timothy Ray G. Jr

Maskwacis Sharing Circle Group

Stephanie Bak

Beverley Lypaczewski

Gary Geller

George Khoury

NAN Team

Elisabeth Eiremiokhae

Cary Green

Nathan Leipziger

Grace Manicone

Matthew Milton

Ruth Jipsen

Ingeborg van Eeden

TJ M. Company

Michael Jekeli

Naomi Angel

Kendra Ross

Audrey Guth

Esther Michaels

Mom Mary

Julie Finni

Heather Bellemare

Kathleen Cunningham

Riikka Wilson

Matters of Movement

My Nana

Harris Krofchick

...continued

Antonio Giordano
Luisa Rabach

Sylvia Gottlieb
Susan Gottlieb

Susan Abramson
Dorothy Astroff

Cassie Di Clemente
Caroline Sweezy

**Uncle Wync, Dr. D, Andra,
MariAnne, Heather, Rhona,
Matthew, and Auntie M**
Sara Gatti

Kyla M. Baccarani
Cynthia McNicol

Thivianayaki Kumarasamy
Jaxon and Hannah Sivanander

Andu
Jessica Dutta Singh

Sandra Takeda
Heather Ley

Leslie Owens
Tracy Owens

The C. Family
Michelle Green

Gale Borison-Socken
Maureen Wilkinson

Rachelle Milne
Tiffany Milne

The Family
Barbara Steinberg

Lynda Tenter
Jason Tenter

My loving husband
Wubit Eco

**Audrey Guth, In Honour
of Your Birthday**
The NAN Team

Barbie Steinberg
Nelle Lakien

Charlotte Heath
Sandra McKenna

Rebecca Mulford
Sarah Wallace

Carly Carrigan
Indy Zavari

Charlotte and J. Heath
Bonnie Wong

L. Perry
Carine Rutherford

Tina Carteciano
Marissa Ageuci



In Memory Of

Stanley Greisman

Janet Torch

Donna Wiseman

Laura Gertsen

Laura Di Giovanni

Carlo Di Giovanni

Fritzi Telpner

Terri Cherniack

My Mother Maria

Cassandra Johnson

Heather Childs

Sara Morley Gatti

Elisabeth a. Connie

Michael Roseman

Christine

Mercedes Flores

Ruth Kerbel

Zarubin Singh

Ronda Green

Greenwin Corp.

Alison Green

Vanessa A. Di Pasquale

Alessandra D'Amelio

Alexandra Collins

Anne Leonard

Ashlee Fotherby

Ashley Wright

Brigette Quattrociocchi-Snarr

Cambridge OPP

Christina Sottile - Sgandurra

Craig Platt

Crystal Wall

Daniel Hickey

Devon Williams

Diana Saudade

Domenic Didiano

Douglas Hamilton

Ellen Snell

Erin Fraser

Fatima McCoy

Fiore Ranieri

Francesca Morassutti

Frank Dodaro

Helen Whitelaw

Hilary Greavette

Jackie Whiston

Jason Morris

Jeff Lucifora

Jodie Benedek John Hester

Jolanta Mazul

Karen Medeiros

Kelly and Dave Hilborn

Kevin Allen

Kristen Weersink

Leanne Boyd

Lianne Mackay

Linda Zibens

Lisa Whitelaw

Lori MacIntyre

Luisa Coletto

Mark Gauthier

Matthew Goeree

Melissa Ruperto

Michael Benkoe

Nicholas Chen

Olivia De Vellis

Opp Auxiliary

Patricia Hickey

Patsy Yang

Peter Puiatti

Pino Didiano

Rita Pece

Ritesh Behl

Ron Caley

Rosanna Di Pasquale

Rose Reentovich

Sabrina Sgroi

Sandy Goncalves

Sarah Walsh

Scott Bentley

Shannon Todd

Sonia Didiano

Stewart Cook

Tanya Hodgins

...continued

Terry White

TJ Cieciora

Tracey Bednarczyk

Tracy Mackay-Stewart

You Salon

Esther Fish

Esther Michaels

Holly Thackway

Lillian Pajic

Naomi Angel

Kimiko Perkins

Marlyn Levy-Grant

Rowhena Rajaram

Margaret Marshall

Patricia Cutts

Kimberley A. Brundle

Ryan Brundle



A photograph of a woman with long brown hair smiling and hugging two young children. The children are also smiling. The woman is wearing a dark blue long-sleeved shirt. The child in the middle is wearing a grey and white striped shirt. The child in the foreground is wearing a purple and white striped shirt.

Since 2009,

THE NANNY ANGEL NETWORK
HAS SUPPORTED OVER

1,300 families

LIVING WITH CANCER.



nannyangelnetwork.com