

WE HAVE
COME
ALONG
WAY

2021
Annual Report





Contents

1**MISSION
AND VALUES****2****FOUNDER
LETTER****3****OUR
COMMUNITY****4****OUR
IMPACT****5****OUR
MILESTONES****6****OUR
PROGRAMS****7****OUR
FAMILIES****8****OUR
VOLUNTEERS****9****OUR
SUPPORTERS****10****FINANCIALS****11****OUR
DONORS**

OUR MISSION

To lessen the impact of cancer on families.

OUR VISION

A world where every mother with cancer receives the support she needs to rest and get well. Where her children learn to cope with the stress of life's challenges and build resiliency in a healthy and safe environment.

OUR VALUES



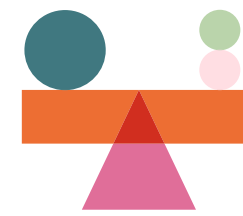
Excellence

Thirty years of nanny agency expertise matched with our Certified Child Life Specialist team, we have developed evidence-based, customized in-home and virtual programs for our families. Our highly trained and vetted volunteers deliver our programs with excellence through all phases of the cancer journey.



Accountability

We are accountable to all our stakeholders – mothers, children, families, volunteers, community partners, funding partners and supporters – and are committed to evaluating our performance, measuring our impact, and improving our results.



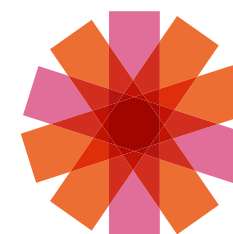
Equity

We believe all mothers with cancer, regardless of race, religion, sexual orientation, or socioeconomic status, should receive the specialized childcare they need during their cancer journey.



Compassion

We know what a difficult time this is for a family. We are here to give hope and support.



Innovation

We are nimble and quick to respond to the changing needs of our families and community with creativity and insight.

BOARD OF DIRECTORS

Audrey Guth
Board Chair

Joyce Frustaglio
Vice Chair

Glen Mortimer
Treasurer

Samantha Cherry
Director

Azam Dawood
Director

Miriam Sweet Goldstein
Director

Shauna Guth
Director

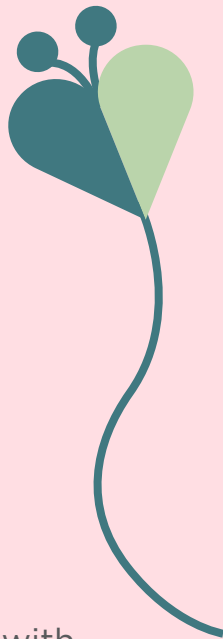
J. Nadia Headley
Director

Gershon Hurwen
Director

Michael Kovendi
Director

Barbara Steinberg
Director

We Have Come a Long Way



Dear Friends,

When I look back and remember the exact moment I decided I needed to do something to help mothers with cancer and their children, to where the Nanny Angel Network is today, I am filled with thoughts of incredible milestones. Seizing every opportunity has allowed us to grow over the last 12 years and push our mission further than I had ever imagined.

I am tremendously proud of the impact we were able to have on so many families living with cancer amid continuing change in 2021. Not only did we make a difference in their lives, but we were able to provide our volunteers and supporters with a sense of purpose when they too needed it most.

We launched our brand-new family event, Angels and Heroes and Bears Oh My! at the Toronto Zoo to celebrate our courageous mothers, connecting our community in a brand new and exciting way. We also held our very first Virtual

Auction to help raise vital funds, with an array of incredible prizes which was a resounding success.

These monumental events allowed us to continue to innovate and to support more families. We were able to expand to new regions, like Hamilton. Our Meal Support Program that to date has delivered over 22,000 nutritious meals to families who need it the most, is possible thanks to our continued donors and passionate meal partners.

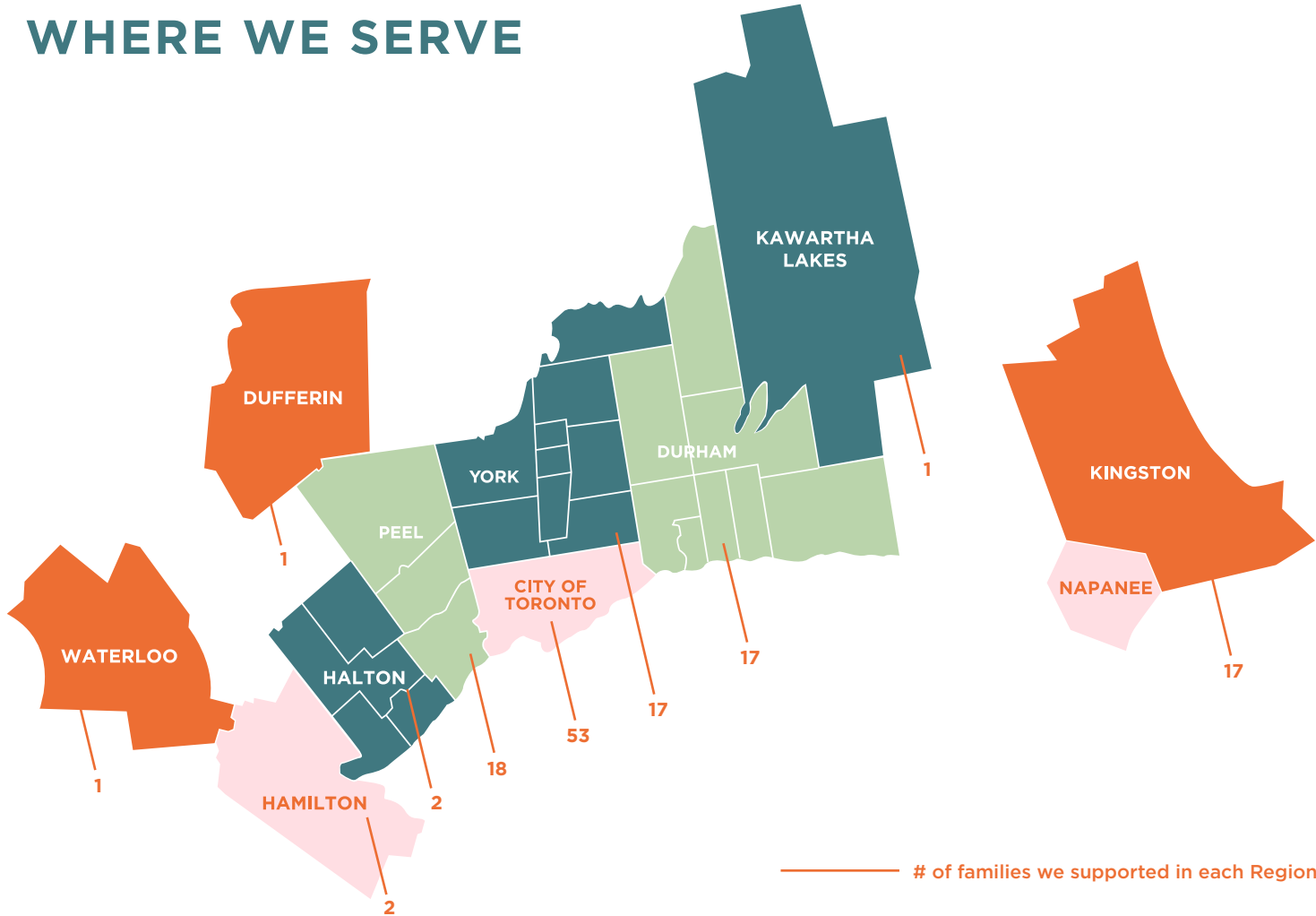
We have come a long way. On behalf of every family we support, we thank you with tremendous gratitude, for being by our side. Without your help, these opportunities would not have been possible.

Audrey Guth
Founder & Board Chair

OUR COMMUNITY

We are a community of more than 195 passionate volunteers, countless supporters and many deeply committed community partners. It is because of you that we have been able to support over 1,750 families living with cancer since our beginnings. In 2021 we seized every opportunity to continue our growth.

WHERE WE SERVE



- | | | | | |
|----------------|----------------|--------------|----------------------|-------------------------|
| Ajax | East York | Markham | Oshawa | Toronto |
| Aurora | Etobicoke | Mississauga | Pefferlaw | Trenton |
| Bowmanville | Hamilton | Mount Albert | Pickering | Westport |
| Brampton | Kingston | Napanee | Prince Edward County | Whitby |
| Brighton | Kitchener | Newmarket | Richmond Hill | Whitechurch-Stouffville |
| Brooklin | Little Britain | North York | Scarborough | Woodbridge |
| East Garafraxa | Maple | Oakville | Thornhill | Yarker |

OUR IMPACT

2021 was a year of profound impact. We supported **128 families** in **35 cities** across **6 regions**. Our commitment to provide new and innovative programs that help our moms and their children never stops. Click [here](#) to see our 2021 impact video.



128+

FAMILIES SUPPORTED

250+

CHILDREN SUPPORTED

100,000

BUBBLES BLOWN

6,000+

HOURS OF VOLUNTEER
PROGRAM SUPPORT

100

MOM CARE BAGS DISTRIBUTED
THROUGH 11 CANCER CENTERS

500

POUNDS OF SLIME

9,000

NUTRITIOUS MEALS DELIVERED
TO FAMILIES IN NEED

189

HOLIDAY STOCKINGS DELIVERED

8,000+

FUN-IN-A-BOX ACTIVITIES
CREATED AND DELIVERED

111

VOLUNTEERS RECEIVED 10 HOURS
EACH OF SPECIALIZED TRAINING

66

HOURS OF VIRTUAL CANCER
SUPPORT FOR MOMS

25

KIDS RECEIVED CHILD LIFE
BEREAVEMENT SUPPORT

30

FAMILIES GRADUATED FROM
NANNY ANGEL NETWORK

ENDLESS

VIRTUAL SMILES



We Have Come A Long Way

From the day that we opened our hearts and doors to help mothers with cancer and their children, moments of opportunity were at every corner of our journey. Here's a look back at some of our most memorable ones that together have helped drive our mission forward.

2009

- The Nanny Angel Network is founded to provide respite to moms with breast cancer as an on- call service, launching its mission to lessen the impact of cancer on families.
- Rethink Breast Cancer funds a \$60,000 pilot program with a Booby Innovation Grant.

2012

- NAN expands our service to include supporting moms with all forms of cancer.

2014

- Audrey Guth receives CNN Hero Award, a year-long initiative that honors everyday people for their selfless, creative efforts to help others. CNN Heroes awarded Audrey \$10,000 for her work to lessen the impact of cancer on families.

2015

- NAN begins providing 4 hours of in-home support and care weekly to moms with cancer, delivered through carefully matched and trained volunteers.

2015

- NAN holds its first annual fundraising Angels and Heroes Gala, featuring Michael Feinstein and raises \$525,000.

2017

- NAN's research is published in Journal of Current Oncology, highlighting the importance of providing childcare to moms living with cancer with inadequate support systems to allow for greater adherence to treatment, medical appointments, and more time to recover.
- NAN launches a foundational Child Life Program to support children enduring the trauma of a mother's cancer. Expands services to include one year of bereavement support following the death of a parent.
- Audrey Guth receives L'Oréal Paris's inaugural Canadian Women of Worth award and charitable grant of \$10,000. A signature philanthropic program elevating and celebrating women who find beauty in giving back.
- NAN begins an annual partnership with University of Toronto Medical School to provide training to first year medical students.

2018

- NAN expands its services to support families throughout the Kingston Region.
- NAN launches a pilot program to support dads with stage 4 palliative cancer.
- NAN develops and launches new robust virtual training program for volunteers.

2019


- Grand Prize Winner of Astellas Oncology C3 (Changing Cancer Care) Prize for best idea beyond medicine to improve cancer care for patients, caregivers and their loved ones. NAN awarded \$100,000 USD to help expand the reach and impact of its services to support more families.
- NAN presents unique proprietary program at the International Child Life Symposium.

2020

- NAN innovates its program delivery and creates brand new support programs to help keep vulnerable families safe and positive during COVID-19. From Camp-In-A-Box and Virtual Mom Cancer Support Group, NAN families are supported throughout the pandemic.
- NAN partners with local caterers and provides 11,000 nutritious meals for families.
- Volunteers experience a brand-new online training and learning management platform to help them thrive while supporting families during the pandemic.
- To support staff, NAN Team participates in a mindfulness program to foster resilience and self-care.
- Referral network expands to include 14 cancer centers and hospitals in the GTA, Kingston and Hamilton regions.
- NAN presents 'How to Support Kids Through Grief' at the International Nanny Association Conference.

2021

- Continuing to thrive in the face of adversity, Angels and Heroes and Bears Oh My! Launches a brand new COVID friendly family event to bring the NAN community back together at the Toronto Zoo!
- NAN launches Virtual Auction in an effort to innovate fundraising during COVID-19 protocols.
- To reach more moms, NAN develops Mom Comfort Kits, delivering care bags to chemo centers.
- To keep holidays joyful NAN launches Holiday Stocking Project for children.
- NAN begins expansion into the Hamilton region to continue driving its mission forward.
- NAN launches Peer Support Program for adolescents 12-16 years.



OUR PROGRAMS

Building Resiliency



Children experiencing a parent suffering from cancer are at risk of developing lifelong social and emotional challenges. The trauma that a mother's cancer journey can inflict on a child can vary and during this time paying close attention to how a child copes with this life change is crucial.

Child Life is a branch of psychosocial support that helps children cope with difficult life experiences. By supporting children with adverse child experiences, we aim to help children living with an ill parent build emotional resilience when faced with physical, emotional, developmental or social stressors, "We knew that we needed to help mothers create space and time within the home so they could focus on their health. We quickly realized the care their children were receiving was equally important for their well-being and development as was the respite for the mom." said

Audrey Guth. The programs that NAN offers focus on the social and emotional needs of children, "Children need a sense of normalcy when they lack stability in their lives. To help with this, all the programs that we build are rooted in Child Life. We provide our volunteers with specialized training, so they are equipped with the tools to help kids learn how to express and cope with their emotions in a healthy manner during the ever- changing uncertainty of their mom's illness." said Alyssa Gallant, Child Life Specialist at the Nanny Angel Network.

From the onset of a diagnosis, during treatment, through to recovery and in some cases, bereavement, the Nanny Angel Network's community of specially trained volunteers guides each child and mother through their experience. We planted a seed that you, our community, has helped us grow.

Continuing to thrive in the face of adversity, Angels and Heroes and Bears Oh My! Launched a brand new COVID friendly family event to bring the NAN community back together at the Toronto Zoo!



OUR MOMS

Johanna's Journey

Leaving your home country to start over is an unknown journey. In 2008, Johanna moved to Canada, she worked as a nanny to build a new life for herself. Living on her own in Canada with no family has been extremely challenging for Johanna. When Eli was just one, she found herself homeless but persevered and kept going to give herself and her son a better life.

Johanna was introduced to the Nanny Angel Network in 2010 when she became a volunteer, providing love and support to a family during their cancer journey. Ten years later, in December 2020 Johanna's world was turned upside down when she was diagnosed with stage three breast cancer. She found herself trying to recover from multiple surgeries and treatments, all while being a single mom, Joanna was now the one in need of support.

"Cancer has really had an awakening



on me. Over time, it has brought me to a place where I value my life and time so much more. It has made me realize that I need to make the most of every day. I don't have any family here, it's just Eli and me, so I haven't had anyone to comfort me when I needed it most." Their Nanny Angels Mikayla and Angelo have been not only a sense of comfort but unbelievable support to both Johanna and her son, even throughout the pandemic,

"I can see that she has helped him build such confidence. I can feel that he's getting all the little things that make kids happy and when he is happy, my joy is overpouring. When they are together, I'm able to take some time for myself and focus on what my body needs."

Johanna reflects on how full her heart feels when she thinks about the support she has received, "It's been such a relief throughout my journey to have someone to support us. Mikayla isn't part of our family, but she treats us like family, she wants to help and do special things with us. It is unbelievable, and I don't know where we would be without her support." I am eternally grateful for her and to NAN.

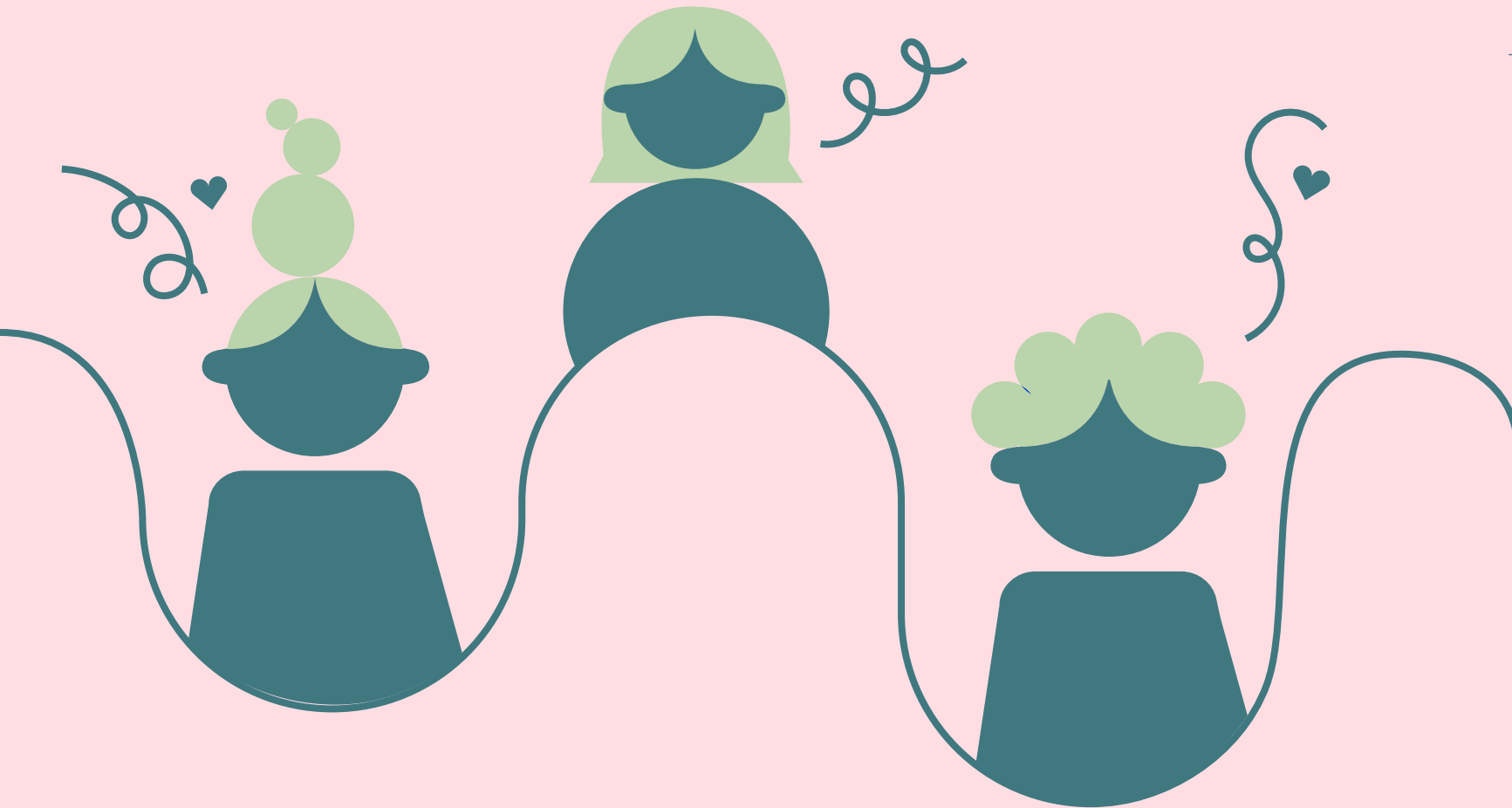
As a single mother who has overcome many obstacles, Johanna's positivity and resiliency are infectious as she pushes forward for her and her son.

"I sometimes cry when I think about what I'm scared of but then I shift my thinking when I catch myself. I focus on healing. There are 20-year survivors of breast cancer. I haven't known a lot about it myself in my life, like my favourite colour. I want Eli to know all these things. I want to see him finish school and help him create his own GPS system to grow up to be a good person. I put that in my mind so that my body delivers."

For Johanna and Eli the Nanny Angel Network has been like family. Both their Nanny Angels have helped them navigate and thrive during the most difficult part of their life. Life in Canada has been an ongoing journey for Johanna, full of ups and downs. The beacon of hope that NAN has brought to their lives gives Johanna hope that she will get through this too and be around to watch her son grow up, knowing she gave him the best start she could in his life.



In Their Words



“I got support from Esther during the lockdown. Even though she couldn’t come over, the virtual help she provided every week was incredible. She answered so many of my questions, and we celebrated my daughter Marianna’s milestones together. She also encouraged me to join NAN’s Mom Cancer Support Group, where I virtually met other moms undergoing treatment, even some with stage 4 cancer.

It’s been a beautiful community to be a part of because we continue to support each other and check in weekly. Esther is now able to visit us in-home every week, which has been so amazing. She takes the time to teach Marianna a lot and takes her to the park when I don’t have the strength. I don’t have any family close by, so Esther has become a special part of our family”

— NAN mom

“NAN opened my mind and empowered me to open up about my issues. They helped me also realize that my daughter has to face the world and she needs the right tools to do so.”

— Sameera, NAN mom



“At one point, one of our kids said he hoped Tessa’s cancer DIDN’T go away because he didn’t want to stop seeing his Nanny Angel. After we got over the initial sting, we realized what he really meant - that the relationship he had formed with his NAN was so important to him, that he didn’t want it to ever end. The free childcare this organization provides for moms impacted by cancer is transformational and vital.”

— Kyle, NAN family

“A Cancer diagnosis is hard on any individual or family. It’s even harder to deal with this during COVID while having young children. During this time, having the meal support program helped us a lot. I could focus on my treatment and other important things as I was satisfied my family was getting regular and healthy meals. My child enjoys the delicious, freshly made meals delivered to my doorstep. It has helped us maintain a level of sanity during a very hard time because even if nothing else was right we always have a great plate of food. They went the extra mile to provide vegetarian options for my family and keep in touch throughout to make it easier. Me and my family are very grateful for this.”

— NAN mom

Our Angels

Grateful is an understatement. We could not support moms with cancer without the deep commitment of the 195+ volunteers who bring our programs to life. With each and every visit you lift up the lives of all the families we support.

“Through our endless laughs, crafts, and dance parties, the family I support reminds me how healing play can be for kids (and adults, too!). Every time I visit them, I’m proud that I can bring the kids some normalcy and create a space where they can share their emotions, good and bad. Volunteering with NAN has given me the opportunity to use play and my own experience as someone whose mom was diagnosed with cancer to help kids cope with some very difficult changes in their lives.”

— **Jordan Chin, Nanny Angel Volunteer**



“I cared for my mum as she fought strong through her battle against cancer. Nanny Angels has given me the opportunity to care for and relate to a child who is experiencing the same thing I experienced when I was younger. I can connect with the child that I volunteer with on a personal level, while also being given the chance to partake in fun adventures with him when mum needs time to rest and recover. Nanny Angels has given me a chance to help a child cope with big and sometimes scary changes in supportive, fun-loving ways.”

— **Marnie Potter, Nanny Angel Volunteer**

“Volunteering at NAN is such a wonderful opportunity to help families who are in need. These families open up to me and let me into their lives during some of their worst moments, and I am able to give the children a few hours a week just to be kids, to let them enjoy life and play, like all their classmates. This is such a relief to all members of the family, it lets the kids play and run like kids, and it lets the parents relax for a couple hours without worrying about their children. Everyone involved is so grateful for everything I do, and NAN is such a great agency that I am really enjoying supporting, as well as their support for me and the families.”

— **Megan, Nanny Angel Volunteer**



“To me, volunteering with the Nanny Angel Network means building meaningful connections and friendships with children facing difficult circumstances”

— **Henry White, Nanny Angel Volunteer**



“Volunteering at NAN means I get the chance to help families in need within my community. I can provide the parents with an opportunity to focus on themselves and provide their children with individualized support and a reliable friendship. In turn, I get to see families grow as they work through this difficult time, and it brings me happiness to be allowed into such an intimate part of their lives to witness this change. Overall, I believe NAN brings me closer to my community because I am developing positive relationships and gaining experience that strengthens my well-being and those within the community.”

— **Cassidy Colalillo, Nanny Angel Volunteer**

To all our volunteers, **thank you** for your unwavering love, passion and dedication to our cause.

A Purse with Purpose

LXR's mission is to make pre-loved luxury goods available to anyone who wishes to own one. Giving more lives to luxury handbags, is what LXR is all about and they do it well, always keeping environmental and social responsibility at the heart of everything they do. Along with that mindset is a strong set of values focused on giving back. When the team at LXR was looking for a meaningful way to pair their purpose-led business with meaningful impact, they matched with the Nanny Angel Network, "We wanted to give back and in looking for a charitable organization we came across the Nanny Angel Network. After speaking with Audrey, we were so moved and inspired by her story, it spoke to both me and my colleagues on such a deep and personal level" said Joslyn Paredes, Chief Operating Officer, LXR. "Mothers never put themselves first. So, when we found an organization that put mothers first, we immediately knew that it was a cause

that we wanted to support and help as much as we could."

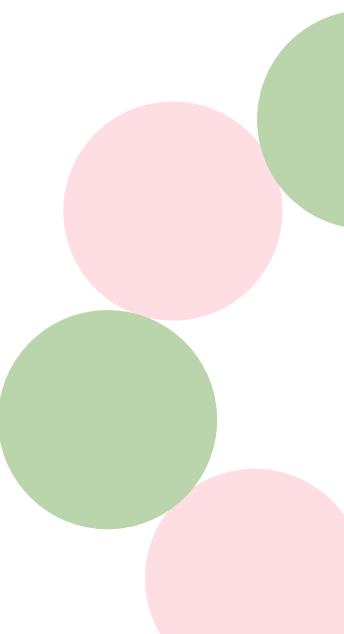
During the pandemic, NAN created a program for immunocompromised moms that kept them safe and allowed them to focus on their health without worrying about providing meals for their families. Thanks to our partnership with LXR, the incredible giveback driven from their Mother's Day and Breast Cancer Awareness campaigns, LXR has helped NAN provide over 4,700 healthy, warm meals to NAN families in 2021. Giving back in a meaningful way is a crucial driver for LXR, and that can be seen through the ripple effect of good that their partnership with NAN has created, "When our business goals and results can help drive life-changing impact, like directly providing the relief of thousands of meals to families, it's not only a concept that drives our team to do more but the direct connection to the hearts of our customers, because



they know that they have been a part of something bigger that's helping to change lives." says Joslyn.

After a year of remarkable impact, both teams are excited for what is on the horizon, "What's exciting for me is that as our business grows, it allows us to give back more. The idea that you can come to work every day and help others who need it most keeps us going and we are excited to do even more." says Laura Swan, Chief Revenue Officer, LXR.

NAN's Meal Support Program has been a lifeline to so many mothers living with cancer. As NAN strives to scale the program, the support from LXR has dramatically helped the program flourish. LXR is putting their purse first so moms with cancer can find the time to put themselves first.



Mackenzie Investments Gives Back

Mackenzie Investments is driven to create a more invested world, together, so that all Canadians can be better off. Part of that includes their commitment to supporting communities and those who need it most. They achieve this through Mackenzie Together Charitable Foundation, which aims to drive community engagement by giving back where their employees works and live. The Nanny Angel Network is one of 30 charitable organizations that the investment management firm gives back to.

In 2019 Mackenzie expanded their charitable support with the intention of giving back to and engaging with more organizations that focused on supporting women in need. When Samantha Cherry, Mackenzie's Senior Manager, Sponsorship and Community Engagement, heard about the Nanny Angel Network it immediately resonated with Mackenzie's new impact strategy and aligned with their expansion goals.

"Everything we do as an organization needs to drive impact – we assess our partnerships on a 'cost per impact' basis so we can not only help a larger amount of people, but help ensure real lived change. NAN's impacts were so clear and we could directly tie our dollars to the results, so our partnership was a perfect fit from the start." says Samantha Cherry, Senior Manager, Sponsorship and Community Engagement



NAN's mission not only matched what Mackenzie's Foundation was looking to achieve, by providing an incredible opportunity for real direct impact, it also grew the company's ability to offer stronger employee engagement activities.

"Our partnership has truly brought our employees together, especially during the pandemic. Everyone has a mother, and the stories of the women that NAN supports really hit home for so many members of our team. Especially during the pandemic when mothers were counted on even more, everyone felt very connected to NAN's cause and asked how they could help more." says Cherry

From a memorable lunch and learn, to countless volunteering opportunities,

NAN has given Mackenzie's employees the chance to come together and feel like they are part of the change, setting the bar the Foundation's future endeavours.

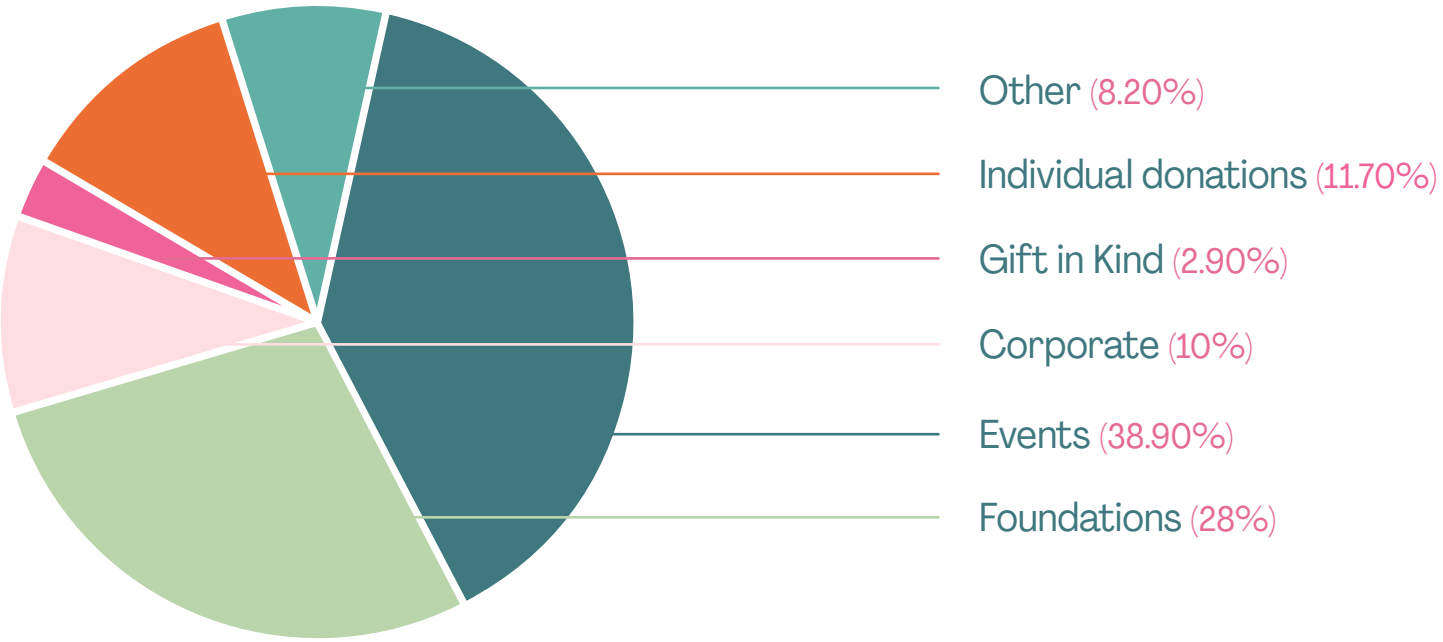
"Our Foundation is rooted in the belief that pairing business with impact not only drives results for both, but more importantly shows us how much more we can achieve when we come together." says Cherry

Mackenzie's vision for the future of their partnership is twofold. Taking part in more employee engagement opportunities as NAN grows, while also increasing their support to help the organization expand to more locations so they can support more families living with cancer.

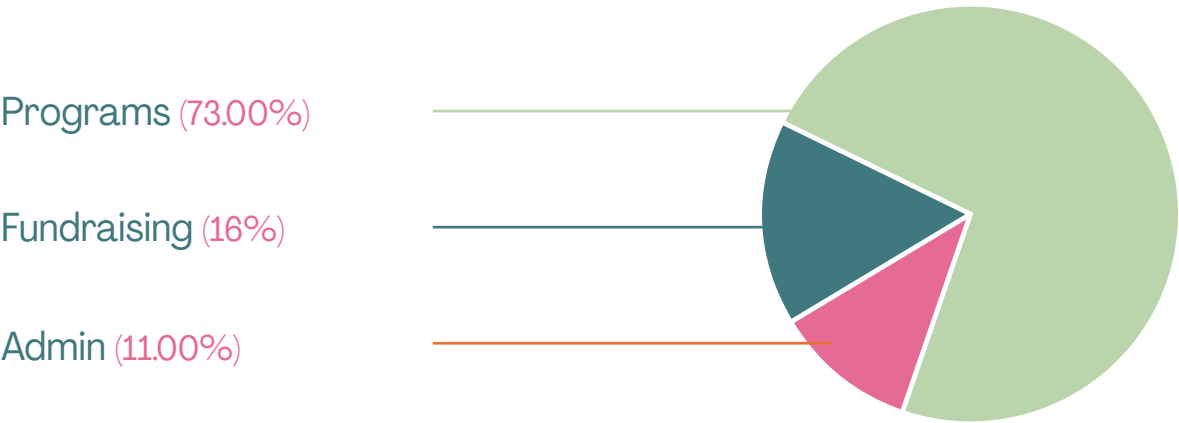
FINANCIALS

Thanks to the unwavering support and generosity of so many individuals, families, companies, organizations and foundations, 2021 allowed us to seize every opportunity and dream of new ones. Every dollar raised goes to support our mission to help lessen the impact of cancer on families.

TOTAL RAISED IN 2021 ————— \$1,690,648.92



TOTAL EXPENSES IN 2021 ————— \$1,570,298.82

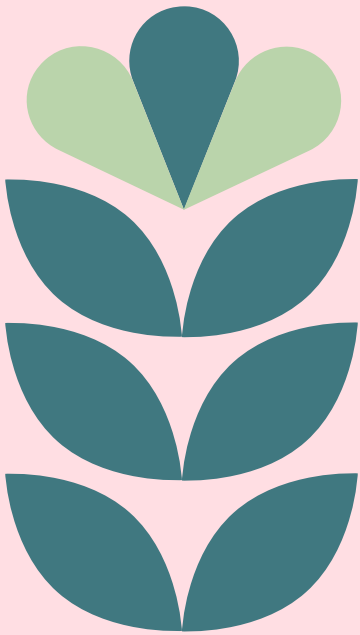


[PLEASE CLICK HERE TO ACCESS OUR 2021 AUDITED FINANCIAL STATEMENTS](#)

OUR DONORS

Thanks to every individual, corporation, foundation, and organization that help drive our work, we can offer supportive and transformational experiences for mothers with cancer and their children free of charge.

The following list reflects the cumulative giving of donations and gifts in kind from January 1, 2021 to December 31, 2021. We have made every effort to include and list all donors accurately. We apologize for any inadvertent errors or omissions. To report discrepancies, please contact our Fundraising Specialist at 416-730-0025 ext. 5.



Heroes \$100,000-\$200,000 Fred and Audrey Guth Homestead Land Holdings Ltd.	Greenrock Charitable Trust Groundswell Urban Planners Inc. Growing Tykes Learning Centre ivari Jesse Guth M.E.H. Foundation Mackenzie Investments Charitable Foundation Minto Foundation Inc. Sierra Corporation Susan Gottlieb The Brown Group of Companies The Catherine and Maxwell Meighen Foundation The Fleck Family Foundation The Gay Lea Foundation
Dream-Builders \$25,000-\$99,999 Argo Development Corporation Bazil Developments Inc. Brampton Brick Limited CIBC Foundation Greenwin Corp. La Fondation Emmanuelle Gattuso LXRandCo, Inc. Rogers Communications Canada Inc. Surplus Furniture & Mattress Warehouse The Miriam and Harold Green Family Foundation Waugh Family Foundation	Partners \$5,000-\$9,999 All Professional Trades Inc. Anix Developments Inc. Benjamin Guth and Mia Shulman Blaney McMurtry LLP BMO Bank of Montreal Daphne and Leslie Goldberg Diamond Personnel Inc. ERS International Finnegan Marshall Inc. First National Financial LP H&A Contractor Inc. Hyde Park Properties Inc. Jack Lains Labelium Canada Limen Group
Champions \$10,000-\$24,999 Anna & Edward C. Churchill Foundation Astellas Pharma Canada, Inc. Bell Canada CIBC (Real Estate Finance Division) Fieldgate Developments & TACC Developments Global Precast Inc.	

Meridian Credit Union
Ontario REALTORS Care®
Foundation
Retail Plazas Inc.
SEBO Canada
SNC-Lavalin Group
Sweeny&Co Architects Inc.
The AmerisourceBergen
Foundation
The Christina Mary Hendrie
Trust
Toronto and Area Road Builders
Association
Tradeworld Realty Inc.,
Brokerage
Vault Mortgage Corporation
Woodbourne Canada
Management, Inc.
World Fine Cars & Mercedes
Benz, Peterborough
Wyse Meter Solutions Inc.
Yorkwood Homes

Changemakers

\$1,000 - \$4,999

Agueci & Calabretta
Alectra Utilities
Alice and Jeffrie Shulman
Andrea Sarkozi
Anish Taneja
Anna Albo
Annalisa Dominelli
Anne and Jack Schneiderman
Azam Dawood
Barbara Belford
California Closets
Concord Steel Centre Ltd.
Conrad Ogniewicz

Constantino Dos Santos
Corum Digital Corporation
Crawford Roofing Corporation
Curly Hair Solutions
Dave Serba
Delaine Hampton
DPM Energy Inc.
Dr. Katherine Enright Pettypiece
Eleanor Steinberg & Joyce Spiegel
Equifax Inc.
Eva Janssens
Frank Ieraci
George Eisenberg
Glen Mortimer
Hampton Securities Limited
Harvey Kalles Real Estate Ltd.,
Brokerage
Helena and Jeff Axler
iA Financial Group
Ideal Solutions Insurance
Brokers Inc.
Isaac Samuel Young
Julie Hough
Justin Mandell
Kaselle and Alan Beach
KMR Bookkeeping
Leah Werry
Madam Justice Gertrude
Speigel
Mari-Jayne Woodyatt
Marion Greenberg
MAZON Canada
Michael Kovendi
Michael Smaye
Minett Capital Inc.
Mircom Technologies Ltd.

Norton Rose Fulbright
Perola Kitchens & Interiors Ltd.
Peter Wookey
Rita Bertossio
ROCK 'N KARMA
Romano-Franco Limited
Royal LePage Real Estate
Services - The Heaps Estrin
Team Ltd.
Seligman & Associates Ltd.
Stephanie Roidi
The Bank of Nova Scotia
The Corporation of the City of
Vaughan
The George Lunan Foundation
The Henry & Berenice Kaufmann
Foundation
The McLean Foundation
Trisura Guarantee Insurance
Company
Ullman Wealth Management Inc.
Viral Nation Inc.

Advocates

\$500-\$999

Adam Buckley
Amedeo Tarzia
Amy Lo
Andree Blouin
Anita and Leon Lapidus
Autosonic Service Station Inc.
Davis Park
Dawn Kelly
Elliott Fotherby
Humberview Insurance Brokers
Ltd.
Ivan Muchalov

James Oliver
Jennifer Spear
Jewish Foundation of Greater
Toronto
Jonathan Held
Karen Soupcoff
Kerigan Kelly
Laura Carr
Lisa Green
Lisa Pinkus
Michelle Bodnar
Mukesh Nathani
Progressive Reno & Contracting
Robert Franklin
Robert Richards
Rowan & Susan Saunders
Rowhena Rajaram
Samantha Schriemer
Sara Handreke
Stacey Hoffer
Steven Torch
Susan Gordin
The Coffey Family Foundation
Tony Stevens
Ulisse Torchia
Uni Star Masonry Ltd.
William Guth
Wyatt Davis
Zain Fancy

Cheerleaders

\$250 - \$499

Ali Pour Navab
Amalia Spensieri
Bernice Leipziger
Beverley Szandtner

Brian Richardson
Catherine Dawson
Christopher Giffin
David D’Onofrio
Dennis Lewis
Devra Cohen Wasser
Elizabeth Eiremiokhae
Eva Nightingale
Farida Dawood
Farooque Dawood
GBS Globe & Business
Glen A. Huber
Icon Dunfair Limited
Iman Navab
James Kirk
Jeff Meads
Jing Du
Karen Kelley
Leanne Boyd
Lisa Green
Litwin Arla
Maria Garofalo
Mario Galizia
Marlene Olyan
Michael A. Brandon
Michael De Tommaso
Nadia Romano
Nelle Lakien
Paul Day
Pearl Panthaky
Ron Starr
Russell Weiss
Sabina Ho
Salvatore Mannella
Sam Wasserman

Samantha Cherry
Samina Ahmed
Sandra Feldstein
Sangita Jaggi
Sparkle Solutions Corp.
Spencer Rocchi
Stephanie Patten-Kibyuk
Stevan Gacesa
Ute Karlson-Lippold
Xaire Malcolm
Yasmin Dawood

Teammates

\$1 - \$249

536 of our pals gave at this level
to give our angels wings.

Gifts in Kind

Accor Hotels
Aim To Maintain Fitness
Air Canada Foundation
Anthony Ricciardi
Arlene Dickinson
Avid Apparel
Birmingham Photography
Bershan Shaw
Birdwatch Nature Shoppe
Bob Berman
Brampton Flight Centre
Brandos Clothing
Café Boulud
Canaroma Bath & Tile
Canyon Ranch
Carmine Biasi
Carol Westcott
Casualife Outdoor Living
Cindy Beitner

Copper Creek Golf Group
Curly Hair Institute
Dan Aykroyd
David Yurman
Debra Wren
Deerhurst Resort Muskoka
Doug Cowan
Dr. Jennifer Pearlman
Dr. Shari Caplan, VitalityMD
Medical Spa Toronto
Elite Island Resorts
Elmwood Spa
Eva Dunford
Executive Nutrition
FashionWear Canada
Food For Thought Catering & Event Management
Four Seasons Hotel Toronto
Fred and Audrey Guth
FWP Trading Inc.
Great Wolf Lodge
Hair by Laurance
Hammam Spa by Céla
Harbour 60 Toronto
Howard Brodsky Jewellers
J. Nadia Headley, HERstory
Jaime Verk
Jamaal Magloire
Jamie Angell
Jeanne Lottie
Jennifer Marsh-Dalimonte
John Turco, Profile Wine Group
Jordan Sarick
Josée Hammill
Jump Plus
Jungle Cat World Wildlife Park

Kate Maura Kilty
KIND Healthy Snacks ULC
Leah Werry
Lenny Panzer, The Case for Wine
Liberty Entertainment Group
Longo's
L'Oréal Paris
Lorraine Fiset
Marlene's Just Babies
Maroline Inc.
Mastermind Toys
McMichael Canadian Art Collection
Melissa Howard, Portmeirion Canada
Michael daCosta, Fortunes Fine Jewellery
Microsoft
Mitch and Judy Wine
MVP Meals
Novo Spa
Oxford Properties Group
Paese Ristorante
Paul Gaspar, Christmas Décor of Toronto
PearlMD Rejuvenation
Peller Estates
Peninsula Lakes Golf Club
Photography by Jérôme Scullino
Piano Piano Restaurant
Pine Valley Florist
Precious Moments Mobile Spa Parties
Prep'd Fresh
Primavera Interior Furnishings

Ltd.
Provocateur Images
Rachel McAdams
Rachel Simpson Photography
Republic Live Inc.
Rexall Care Network
Richard Emmanuel
Rocky Crest Golf Resort
Samuel Bardon, Periphery
South Hill Home
Splitsville Entertainment Inc.
Ste. Anne's Spa
Surplus Furniture & Mattress Warehouse
The Anne Innis Dagg (AID) Giraffe Foundation
The Food Dudes
The Graze Anatomy
The Keg Steakhouse + Bar
The Miller Tavern
The Rampant Chef
Theo Décor
Toben Food by Design
Toronto Maple Leafs
Toronto Motorsports
TruBliss Wellness & Beauty Spa
Upper Unionville Golf Club
Watson's Glen Golf Club
WHOOSH!
Yumba

Thanks to the unwavering support and generosity of so many individuals, families, companies, organizations and foundations, 2021 allowed us to seize every opportunity and dream of new ones. Every dollar raised goes to support our mission to help lessen the impact of cancer on families.



Since 2009,
The Nanny Angel
Network has supported
over 1,750 families
living with cancer.

