

A decorative border of green line art flowers and leaves frames the central text. The flowers are stylized with multiple petals and simple centers, and the leaves are small and pointed.

nankind

Where Hope Grows

Annual Report
2024

Table of Contents

01. Our Founder

02. Mission & Values

03. Our Community

04. Our Impact

05. Our Programs

06. Our Families

07. Our Volunteer Angels

08. Our Partners

09. Our Financials

10. Our Donors

Our Vision

Our Values

Our Mission

Board of Directors

Ontario regions we serve

Snapshots of impact

Expanding support for children and families

A circle of support

03

05

07

08

09

10

11

13

15

17

19

21

23

25

27





Our Founder

Dear Friends,

As I reflect on this past year, I'm filled with deep gratitude and a renewed sense of urgency.

Gratitude, for the unwavering support from our community, donors, volunteers, and partners who continue to show up for families facing cancer. Because of you, we've been able to provide safe and compassionate childcare, deliver thousands of meals, and introduce new programming that helps children feel less alone during one of the hardest times in their lives.

Urgency, because our waitlist is growing. Nearly every day we get a referral for a parent desperate for support. These are parents undergoing cancer treatment who do not have access to childcare, who are too exhausted to prepare meals, and whose children are quietly carrying the weight of worry.

In response, we expanded our services in new and meaningful ways. We launched Peer Support Groups for

children, a powerful step forward in addressing the emotional needs of young people navigating a cancer diagnosis in their family. These groups provide safe, supportive spaces where kids can connect with others who truly understand what they're going through. Whether online or in person, they can foster a sense of belonging, reduce feelings of isolation, express themselves and build resilience. It's a reminder that healing doesn't happen alone, and that even the youngest voices deserve to be heard and supported.

Our annual family event Candy Land was another shining moment. For one day, families were able to forget about hospital visits and side effects. Love echoed through the room as kids ran from station to station, and parents looked on with joy, not as patients, but simply as moms and dads watching their children have fun. A beautiful reminder that joy is still possible, even in the midst of hardship.

And thanks to you, our Holiday Campaign was an overwhelming success. The generosity poured in,

from heartfelt one-time donations to volunteers helping pack stocking gifts. You gave hope, comfort, and help to parents who needed it most during a busy season.

Every story, every service, every moment of relief we provide is made possible because of this extraordinary community. But the need is growing. And with your continued support, I believe we can rise to meet it.

From the bottom of my heart, thank you for being part of this mission. Thank you for walking alongside us as we work to ensure that no parent faces cancer alone, and no child is left without care.

With gratitude,

Audrey Guth
Founder and Executive Director, Nankind

Our Vision

A world where every parent with cancer receives the support they need, so they no longer have to choose between their care and the care of their children. Where their children have the support of a specially trained Volunteer Angel to express their feelings in a healthy way and build emotional resilience.



Our Values

Compassion

We know what a difficult time this is for a family. We are here to give hope and support at every stage.

Excellence

Due to thirty years of nanny agency expertise matched with our Certified Child Life Specialist team, we have developed evidence based, personalized support for our families. Our trained and screened volunteers deliver our programs with excellence through all stages of the cancer journey.

Innovation

We are nimble and driven to respond to the changing needs of our community with creativity and insight.

Inclusion

We believe all parents with cancer regardless of income should receive supportive cancer care at every stage of their journey.

Accountability

We are accountable to all our stakeholders, parents, children, families, volunteers, community partners, funding partners and supporters, and are committed to evaluating our performance, measuring our impact, and improving our results.



Our Mission



To lessen the social and emotional impact of cancer on families.



Our Community



At the heart of Nankind is a dedicated community of leaders, volunteers, and supporters working together to uplift parents facing cancer and their children at every stage. Our Board of Directors guides our mission with integrity, while our Volunteer Angel network helps us reach families across Ontario, ensuring they feel supported and never alone.

Board Of Directors

Audrey Guth
Board Chair

Joyce Frustaglio
Vice Chair

Michael Kovendi
Treasurer

Anne Feehely
Director

Azam Dawood
Director

Jennifer Bertoia
Director

Jennifer Green
Director

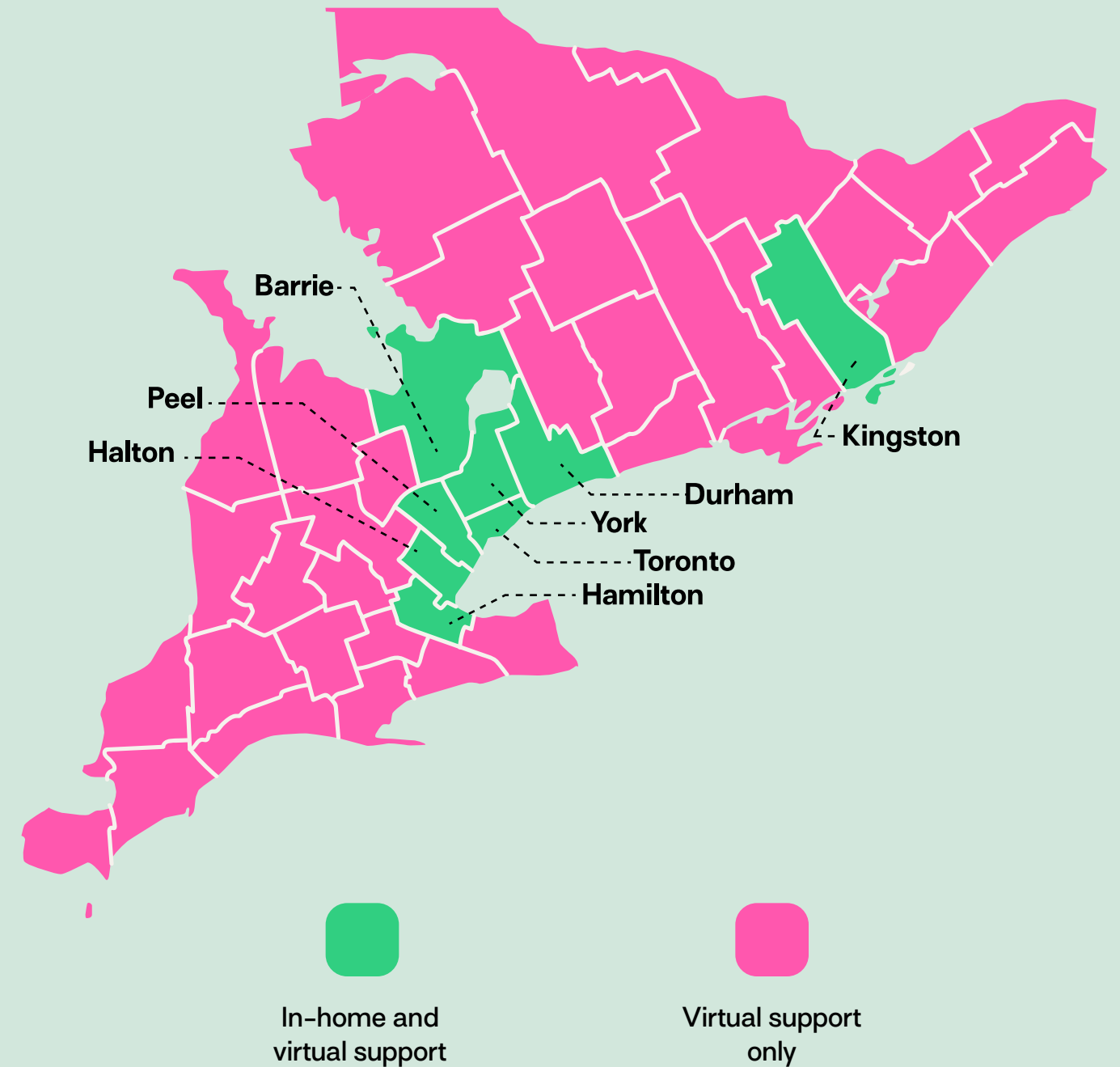
Shauna Guth
Director

J. Nadia Headley
Director

Rebecca Rosenberg
Director

Sean Weirda
Director

Ontario regions we serve



Our Impact

Every number tells a story of care, connection, and hope. In 2024 we delivered meaningful support to families facing cancer through trusted volunteers, new programs, and passionate community partnerships. Behind every number is a child, a parent, a caregiver, and countless moments of relief and joy. Together, we turned compassion into action and made a lasting difference when it mattered most.

1500+

“How to Talk to Kids about Cancer” booklets shared



Summer dreams unlocked for 70+ kids at awesome camps!

500

Candy Land event attendees



Hundreds of carefree moments made just for kids



430+

children empowered



350+

volunteers engaged

260+

families lifted, loved, and never alone

1,865+

Fun-in-a-Box’s bursting with joy, creativity, and giggles

20+

children gently guided through grief with love and care



75

hours of Virtual Mom Support Group connection

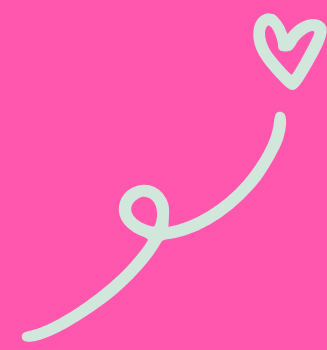
350+

holiday stockings stuffed with cheer and comfort



10,000+

meals full of nourishment delivered



Canadian Event Award Winner for Best Design & Creative for Candy Land

Endless smiles



Snapshots Of Impact

In 2024, we deepened our impact by uniting volunteers, partners, and supporters around our mission. Every act of kindness, from volunteering to fundraising, helped us grow hope, inspire connection, raise awareness, and reach more families.

Celebrating Our Angels

We gathered in gratitude to honour our incredible Volunteer Angels for our Annual Appreciation Day, whose time and hearts bring connection, care, and comfort to hundreds of Nankind families.



Equifax Gives Back

For National Volunteer Week, the team from Equifax Canada rolled up their sleeves to assemble therapeutic activity kits, reminding us that even small acts of kindness ripple outward.

Dancing for a Cause

Over 500 dancers from McMaster University fundraised \$4,100 through events, led by one of our amazing Homework Angels. Hamilton, we feel the love!



Bingo for Good

Our Delta Bingo partnership helped support Nankind's Meal Program, ensuring more families received nourishing meals during the toughest part of their cancer journey.



Candy Land Magic

Our sweetest event of the year returned! Candy Land brought joy, laughter, and community to 500+ attendees, giving families navigating cancer time together.

Teddy Bears Bring Comfort

In honour of World Cancer Day, our community came together to raise funds for 200 Teddy Bear Kits.



Holiday Hope on CP24

With a little holiday magic from CP24 and TOBEN by Design, our Holiday Meal Campaign inspired 50 new donors to give. Jennifer Wilson's heartfelt story showed just how powerful one warm meal can be for families facing cancer.



Our Programs

Expanding support for children and families

We continue to deepen our commitment to supporting the emotional well-being of children by expanding our Child Life-led programming. Designed to help young people cope with the overwhelming realities of having a parent with cancer, building support programs through this lens allows Nankind to create an impact that will be felt for years to come.

This year marked the launch of Peer Connections, a new program offering virtual and in-person support groups for children. “We launched Nankind Clubhouse for children living with an ill parent and Kind Connections for children navigating

grief and bereavement to ensure that we can support children at every stage of their parent’s cancer journey,” said Nankind’s Child Life Specialist. “By creating separate groups for ages 5 to 9 and 10 and up, we can meet children where they are developmentally, offering age-appropriate support through play, meaningful conversation, and peer connection that helps them feel seen, heard, and less alone.”

Peer Connections provides a space to be seen, heard, and supported during some of the most uncertain moments of their lives. “At first, the groups were small, but word spread quickly,” said Nankind’s Child Life Specialist.



“Kids who were shy at first started coming back week after week. They began to smile more, share more, and support each other in beautiful, unexpected ways through the games and activities we created for them.”

As more families saw the value of giving their children the opportunity to process their experiences alongside others with a shared journey, the program grew quickly. Whether through therapeutic play, guided discussions, or moments of laughter, each session helped children feel less alone and more empowered.

“When we give kids a safe space to talk, they amaze us with their honesty, their resilience, and their ability to connect,” said Nankind’s Child Life Specialist. “It’s incredible to see how healing begins the moment they realize someone else understands and they can find a peer who also has a parent living with cancer.”

These safe, consistent spaces are more than a source of comfort during a parent’s illness, they’re laying the foundation for lifelong emotional stability. Children who are supported through their toughest moments today are more likely to grow into adults with stronger coping skills, emotional awareness, and the ability to support others.

By investing in the mental well-being of children now, Nankind is not only helping families navigate the present, they are shaping stronger futures. It’s a mission rooted in hope, healing, and the belief that care today creates multigenerational impact for years to come.

A Circle Of Support

With a background in nursing and a Master's in Counselling Psychology, Miriam Sweet Goldstein, M.Ed., RN, brings clinical training and emotional insight to her work with Nankind.

Miriam's journey with Nankind began 16 years ago, following her own experience with cancer. As one of the organization's earliest volunteers, she contributed to the development of its first volunteer training program, an effort that helped define Nankind's caring approach. Over the years, she has continued to support the

organization in many ways, including nominating founder Audrey Guth for the CNN Hero Award, which Audrey proudly received. Today, Miriam continues to generously volunteer her time, leading a virtual support group for moms facing cancer.

When Miriam first imagined the support group, she knew it needed to be more than a weekly call. It had to be a space where moms facing cancer, while parenting young children, could show up exactly as they are, overwhelmed, hopeful, exhausted, grieving, or unsure. Sometimes all of those at once.

Miriam understood the foundations of therapeutic groups, but what she and the women created together became something deeper. "A cancer diagnosis is hard for anyone, but for mothers of young children, the experience is uniquely complex. They are balancing treatment, surgery, chemo, radiation, while still being present for their families. This group gives them space to speak freely, share their fears, and feel less alone," she said.

Launched at the suggestion of Nankind's founder, Audrey Guth, the virtual support group quickly became one of the organization's most meaningful programs. While Volunteer Angels provide in-home childcare, the group supports mothers emotionally, meeting them wherever they are,



"A cancer diagnosis is hard for anyone, but for mothers of young children, the experience is uniquely complex. They are balancing treatment, surgery, chemo, radiation, while still being present for their families. This group gives them space to speak freely, share their fears, and feel less alone."

whether from a hospital bed, a chemo chair, or during their children's nap time.

The virtual format has made the group widely accessible. Moms from across Nankind's service areas can attend regardless of their energy level or physical location. "Moms have joined from treatment rooms or in between school drop-offs," said Miriam. "It allows them to stay connected without needing to be anywhere but present."

Over time, the group has grown into a tightly woven community. The moms formed their own WhatsApp group, sharing daily messages, resources, and moments from their lives. Some have organized in-person meetups with their children. "When one beloved member passed away, several attended her funeral and continued to support her family. That speaks volumes. These are real connections," said Miriam.

While Miriam facilitates with care and presence, it's the moms who

truly carry each other through. "They offer something unique, a shared experience," she says. "It's late-night texts or advice from someone who's lived it. When a mom says, 'I get it,' she means it."

Some stories stay with her. One began when a mom joined the group while pregnant and undergoing chemotherapy after being diagnosed with Stage 4 metastatic cancer. "That baby is now in kindergarten," said Miriam. "Her mother continues to live with so much love and presence. She has shared so much with the group. It's a reminder of how beauty can exist even amid difficulty."

The impact extends beyond the group. Moms gain confidence to ask for what they need, whether it's a second opinion, support at home, or a different treatment path. "I hope even if a mom joins us just once she leaves knowing she's not alone. That her emotions are valid, and that connection is possible, even in the darkest moments," said Miriam.

"This is not a therapy group," she adds. "It's a community. A place where experiences are heard, shared, and supported, without judgment. It's real, it's honest, and it matters." In this virtual circle of care, what begins as conversation often becomes connection, a quiet reminder to every mother that she is not alone.

Our Families

When Jennifer was diagnosed with cancer in March 2024, everything changed. “It came out of nowhere,” she says. “I thought I was in the clear. Then they told me it was in my liver. I remember thinking, this can’t be happening.” Her first thought was Gabriela, her daughter, her joy, her reason. “She’s my light. I always tell her, ‘You’re my superpower.’ Somehow, I believe she’s helping me heal, just by being who she is.”

But with the shock of diagnosis came overwhelming questions. How would she care for Gabriela through treatment? That’s when Jennifer found Nankind. “I didn’t know much at first. I just knew I needed help, someone who understood what this journey might look like, and how to walk it with a child by my side. Nankind showed up like an anchor.”

Support came quickly. Gabriela was matched with a Volunteer Angel named Chryshanthi, who brought creativity, connection, and warmth into their home. Nankind’s Virtual Childcare

Support and the engaging Fun-in-a-Box kits gave Gabriela meaningful, joy-filled activities that brought her comfort, and gave Jennifer the time she needed to rest and recover. “Knowing Gabriela had someone like Chryshanthi to talk to, play with, and just be a kid around, that was huge. I could exhale for the first time in weeks.” She said.

For Jennifer, meals were another lifeline. With treatment draining her energy, Nankind’s delicious, ready-made dishes meant more than convenience. “They took the weight off my shoulders. I didn’t have to think about groceries or cooking or even washing dishes. It gave me space to focus on getting well.” She said.

She also found emotional healing in Nankind’s virtual circle of other mothers facing cancer. “There’s something powerful about being in a space where you don’t have to explain. You’re surrounded by people who get it. We all created that space for one another and reminded each other that we are not alone in this.”



“There’s something powerful about being in a space where you don’t have to explain. You’re surrounded by people who get it. We all created that space for one another and reminded each other that we are not alone in this.”

A moment that stands out above all others was Nankind’s Candy Land event. “That day was pure joy. We walked into this magical world, bright colors, music, games, laughter. For the first time in a long time, I forgot I had cancer. Gabriela was beaming. We made memories that I’ll carry with me forever.” Jennifer recalls. “I didn’t want to leave. It felt like stepping into a



dream, like being Alice in Wonderland. I didn’t think about treatments or side effects or appointments. I just felt happy. And that kind of happiness, it heals, too.” She said.

Looking back on the past year, Jennifer speaks with a heart full of hope. “No one wants to go through cancer. But when you do, and when you have someone walking beside you the way Nankind has, it changes everything. They’ve helped me survive this, yes, but more than that, they’ve helped us live through it. Fully. Joyfully. Together.”

Jennifer’s journey is a testament to the power of community, care, and small, meaningful moments. With Nankind by her side, she found moments of light and love within it. Her story reflects what’s possible when families facing cancer are given the tools, compassion, and connection they need to keep going, together.

Our Volunteer Angels

Our mission comes to life through the heart and dedication of our Volunteer Angels. With every visit, every virtual activity, and every moment of support, they bring comfort and connection to children trying to understand their parent's cancer. One family at a time, our volunteers turn compassion into meaningful, lasting change that will be felt for years to come.



"I am so grateful for this opportunity to support Nankind as a volunteer! Creating crafts for kids who are affected by their parent's cancer means a lot to me because as a doctor working with cancer patients, I see the effect cancer can have on the entire family. Putting a smile on a kid's face and helping them build back their confidence to just be kids again makes me feel like I'm making a difference in the world."

Ana Luisa Pena, Volunteer Angel



"Volunteering with Nankind has been an incredibly fulfilling experience. As part of the virtual support program, I've had the privilege of providing care and connection to families navigating the challenges of cancer. This role has shown me firsthand the profound impact even small gestures can have on a family's emotional well-being."

Simranpreet Grewal, Volunteer Angel



"I wanted to express my heartfelt gratitude for the opportunity to volunteer with Nankind and be placed with such an incredible family. Nankind's mission to support families facing cancer is deeply meaningful to me, it's been both an honour and a profoundly impactful experience."

Colleen Pakkidis, Volunteer Angel



"I've been a Nankind volunteer for over six months and have never volunteered for any other organization that has given me such a meaningful experience. As someone who lost her mother at a young age to cancer, it brings me immense joy to assist my family four hours a week to take care of their child."

Natasha, Volunteer Angel

Our Partners



A legacy of kindness: Emmanuelle Gattuso's impact on families facing cancer

Innovation and impact, that is how Emmanuelle Gattuso described in two words her philosophy for philanthropy, and why she has chosen to support Nankind since 2017, thanks to the organization's forward-thinking approach to supporting families facing cancer. As a deeply respected leading Canadian philanthropist, Emmanuelle is known for her unwavering philanthropic commitment to healthcare and advocacy for underrepresented communities through her foundation, La Fondation Emmanuelle Gattuso.

For Emmanuelle Gattuso, philanthropy is not simply about giving. It's about giving meaningfully, with intention, and in response to what moves you. Cancer has touched Emmanuelle's life in many ways. Long before her own diagnosis, she walked alongside her mother and sister through their cancer journeys. The experience left a lasting impression, guiding a lifelong commitment to making the cancer journey less lonely and frightening for others.

When Emmanuelle Gattuso was diagnosed with cancer, she realized firsthand how frightening and powerless the waiting period between symptoms and a treatment plan can feel. Wanting to give patients back a sense of control, she and her late husband, Allan Slaight, made a landmark gift to establish the Gattuso Rapid Diagnostic Centre at Princess Margaret Cancer Centre. "There isn't a month that goes by without someone telling me how it made all the difference," she said.

Emmanuelle Gattuso's legacy is not only one of medical research and advancement, it is rooted in empathy. She has always been drawn to organizations that think differently and act from compassion. When she learned about Nankind, she saw an idea that was not only innovative but essential. "The medical aspect of cancer is only one part of it. The personal, emotional, and family impact can be just as significant. Nankind fills a gap that others can't," she said.

Her support of Nankind's meal program, launched during the pandemic, has allowed thousands of meals to be delivered to families at a time when grocery shopping for

Emmanuelle



immunocompromised parents was unsafe, and cooking overwhelming. "Even in the best of times, feeding a family three meals a day is hard. But when a parent has cancer, it becomes an impossible burden," she said. "Nankind found a new way to ease that pressure in the midst of the pandemic, and I thought, wow this is amazing."

For Emmanuelle Gattuso, Nankind's impact extends far beyond nourishment, it's about emotional resilience and understanding, especially for children. "It's not easy for kids at any age to talk about cancer. I didn't realize how difficult it was for children to be living alongside someone in their family who has cancer.

What stands out most to her was how Nankind helps children make sense of what's happening at home when a parent has cancer. "What Nankind is doing is so incredible. It's a unique and innovative thing to do, and so important. The medical aspect of cancer is only one part. The personal, the psychological, and the impact on everybody around the patient is just as, if not more, important."

Giving children space to express their feelings, and helping parents find the words to talk about cancer, is, in her eyes, one of the most meaningful forms of support. "When families recover and continue to have a great family life, I believe they will remember it and pay it forward. It's a cycle of kindness."

At the heart of her giving is an enduring value, kindness. "Kindness isn't just a virtue, it's a way of being. It's what I hope to pass on." Whether through a gift, a connection, or a conversation, she hopes her actions inspire others to give in ways that feel personal and meaningful. "It doesn't have to be monetary. Time is the most precious thing we have. You can't buy it, and you can't get it back. Giving your time is one of the most powerful gifts of all," she said.

Her hope for her legacy is simple yet profound, that others will see how generosity, big or small, can ripple outward. "What you do for one person might inspire them to help someone else. It's a cycle of paying it forward." When asked to describe Nankind in one word, she doesn't hesitate, "Kindness," she said.

Thanks to Madame Gattuso's belief in innovation, impact, and compassion, thousands of families facing cancer have felt cared for and connected by Nankind. Her story is a reminder that change does not only come through grand gestures, it also lives in small, thoughtful acts of care. And when care is given with intention, it has the power to transform lives.

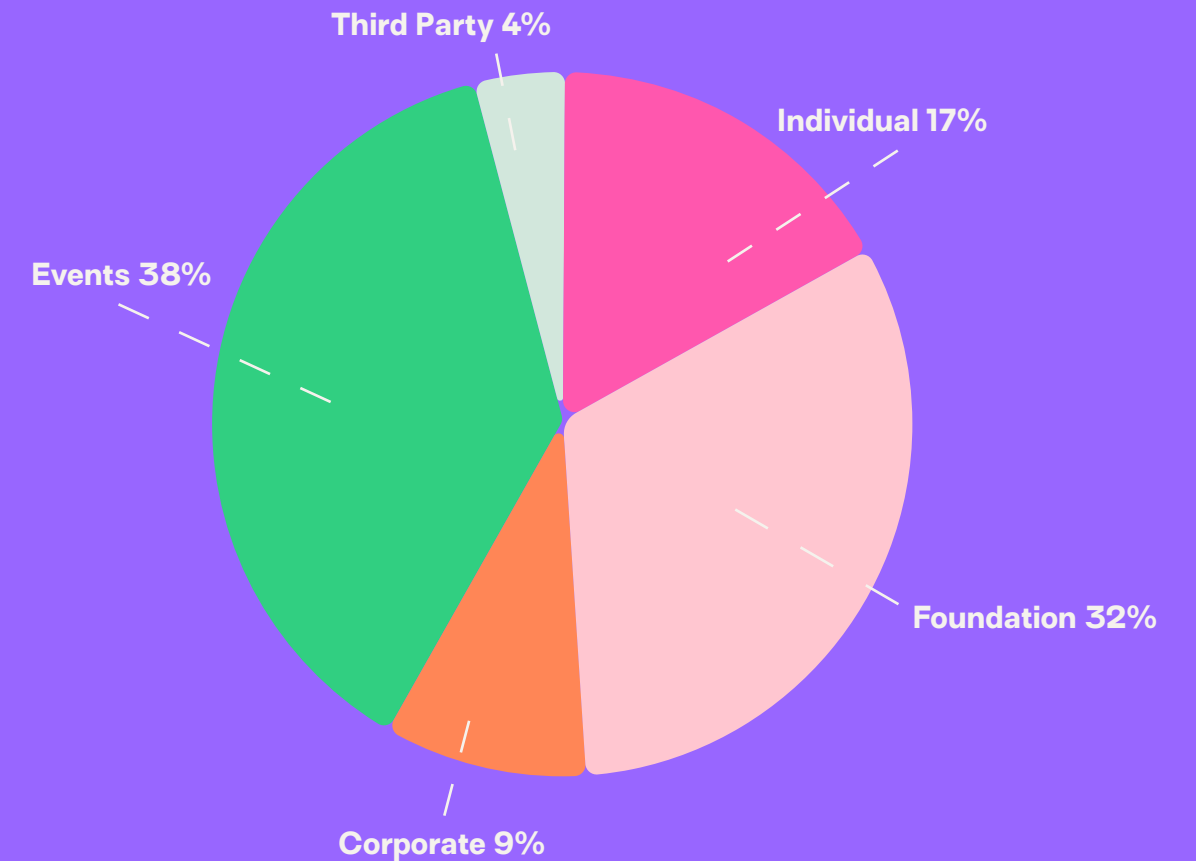
Our Financials

Every dollar entrusted to Nankind is a commitment to families facing cancer. This past year marked a record in fundraising, with nearly \$2 million dollars raised, an incredible show of support. We remain dedicated to transparency, accountability, and ensuring that resources directly power the programs and people making a difference.

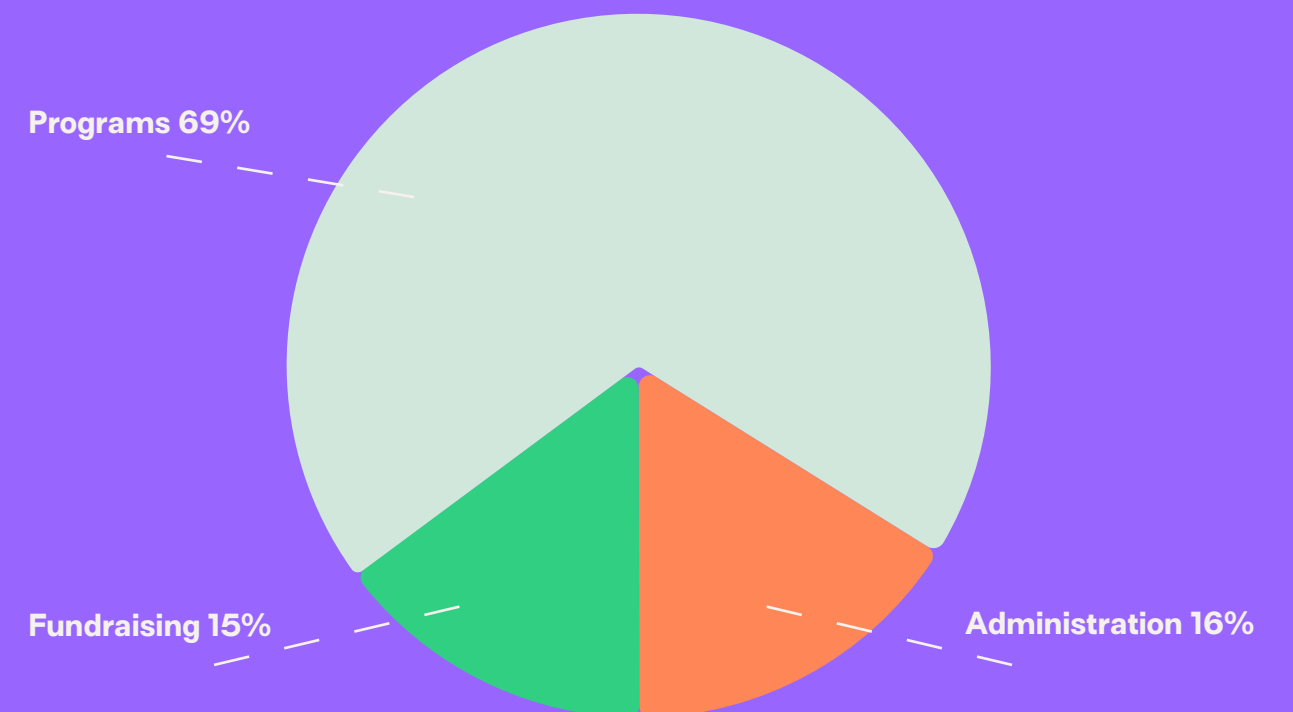
Every contribution fuels critical services that extend beyond hospital walls, reaching parents, children, and caregivers where support is needed most. By investing in whole-family care, you're helping bridge a vital gap in the cancer care system and build a more compassionate future.

Of note – Nankind received an AA Rating from Veritas Charitable Foundation, indicating the organization was exceeding charity sector averages in the areas of strategy, finance, governance and impact and received the highest rating on return on charitable capital, meaning for every \$1 dollar donated, there was \$3 of value created.

Total Funds Raised in 2024: **\$1,958,152**



Total Expenses in 2024: **\$1,508,597**



Our Donors

To every individual, partner, foundation, and community that stood beside us this year, thank you. Your generosity is more than a gift, it's a lifeline for families facing cancer. Whether through a donation, a fundraiser, foundation, or event sponsorship you have helped bring care, comfort, and connection to families who need it most.

\$100,000 - \$200,000

- ◆ Fred & Audrey Guth
- ◆ La Fondation Emmanuelle Gattuso
- ◆ Smith-Homestead Foundation

\$25,000 - \$99,000

- ◆ Anonymous Estate Bequest
- ◆ Bazil Developments Inc.
- ◆ Cary Green
- ◆ CIBC Foundation
- ◆ Delta Downsvew Charities Association
- ◆ Mackenzie Investments Charitable Foundation
- ◆ Surplus Furniture & Mattress Warehouse
- ◆ The Dunin Foundation
- ◆ The Davies Charitable Foundation
- ◆ The Substance Group
- ◆ The Waugh Family Foundation
- ◆ TMA Spring Gala

\$10,000 - \$24,999

- ◆ Alectra Utilities
- ◆ Anna and Edward C. Churchill Foundation
- ◆ Argo Development Corporation
- ◆ Astellas Pharma Canada, Inc.
- ◆ Barbara Belford
- ◆ Baruch Scheinberg
- ◆ Brampton Brick Ltd.
- ◆ City of Hamilton
- ◆ Equifax
- ◆ ERS International
- ◆ Gilead Sciences Inc.
- ◆ Global Precast Inc.
- ◆ Greybrook Realty Partners
- ◆ Growing Tykes Learning Centre
- ◆ Limestone Capital
- ◆ MEH Foundation
- ◆ Nadia Petrucci
- ◆ Oakhill Group
- ◆ Paradise Developments
- ◆ Robert Trager
- ◆ Roger Greenberg
- ◆ Rogers Communications Canada Inc.
- ◆ TD Ready Commitment
- ◆ The Alice and Murray Maitland Foundation
- ◆ The Ben and Hilda Katz Charitable Foundation
- ◆ The Catherine and Maxwell Meighen Foundation
- ◆ The Corporation of the City of Vaughan
- ◆ The Miriam and Harold Green Family Foundation

\$5,000 - \$9,999

- ◆ All Professional Trades
- ◆ Azam Dawood
- ◆ Barrick Gold Corporation
- ◆ Bayview Golf and Country Club
- ◆ Bayview Village
- ◆ Benjamin Guth & Mia Shulman
- ◆ Christina Mary Hendrie Trust
- ◆ Con-Drain Company (1983) Limited
- ◆ Daniela De Tommaso
- ◆ Diamond Personnel Inc.
- ◆ Frederick and Douglas Dickson Memorial Foundation
- ◆ Gerry DiLeo

- ◆ Government of Canada, Canada Summer Jobs
- ◆ Howard and Debbie Belford
- ◆ IA Financial Group
- ◆ Jeff & Shelley Parr
- ◆ Jonathon Sherman
- ◆ Lina Bigioni
- ◆ Lorrie Brown
- ◆ MJRP Capital Inc.
- ◆ Paul Roberts
- ◆ Peter Salerno
- ◆ Peter Wookey
- ◆ Rachel Meyer
- ◆ Rachele Smith

\$1,000 - \$4,999

- ◆ 24 Good Deeds
- ◆ Andrew Piacentini
- ◆ Anne & Jack Schneiderman
- ◆ Armindo Amaro
- ◆ Autosonic Service Station Inc.
- ◆ Bharti Mistry
- ◆ Carolyn Longo
- ◆ CGS Architects
- ◆ Charities Aid Foundation
- ◆ Concord Steel Centre Ltd.
- ◆ Conrad Ogniewicz
- ◆ Corrie Pollock
- ◆ Curl Keeper
- ◆ Dana Lengyel
- ◆ Darryl Goodall
- ◆ Denny's
- ◆ Eleanor Steinberg and Joyce Siegel
- ◆ Elliott Fotherby
- ◆ Gary Goldman
- ◆ Gertrude Speigel
- ◆ Glen Mortimer
- ◆ Goldrich Printpak Inc.
- ◆ Hugo Blasutta
- ◆ Ivan Muchalov
- ◆ Jackman Foundation
- ◆ Jane Slote
- ◆ Jennifer Bertoia
- ◆ Jocelyn Yacoub
- ◆ Jon Finkelstein and Finkelstein Family Foundation
- ◆ Kaselle Beach
- ◆ KMR Bookkeeping
- ◆ Lauren Thomas
- ◆ Linda Thomson
- ◆ Lisa Pinkus
- ◆ Liuna Local 183
- ◆ Robert Gill
- ◆ ROM-Grand Waterfront Ltd.
- ◆ Rotary Club of Toronto Charitable Foundation
- ◆ Sofina Foundation
- ◆ Tamarack Lumber
- ◆ The Arthur and Audrey Cutten Foundation
- ◆ The S.E. Lam Family Foundation
- ◆ The Starbucks Foundation
- ◆ The Incredible Printing Co. Inc.
- ◆ The Michelin Construction Group Inc
- ◆ Toronto Star Fresh Air Fund
- ◆ Liz Pillon
- ◆ Lorella Santarossa
- ◆ MAC Dance Recreational
- ◆ Mari-Jayne Woodyatt
- ◆ Marilyn Shupak
- ◆ Mario Sardo Sales, Inc.
- ◆ Mark Falbo
- ◆ Marlene Krybus
- ◆ MAZON Canada
- ◆ Meyer Godfrey
- ◆ Michael Applebaum
- ◆ Michael Kovendi
- ◆ Michelle Sher
- ◆ Myron Pestaluky
- ◆ Niall Lynagh
- ◆ Nick Melatti
- ◆ Nilpa Srivastava
- ◆ Norman Godfrey
- ◆ Norton Rose Fulbright Canada LLP
- ◆ Part Time CFO Services LLP
- ◆ Pinnacle IP Solutions
- ◆ Pomerleau
- ◆ RBC
- ◆ Reza Hosseinan
- ◆ Rita Bertossio
- ◆ Rita Ciccolini
- ◆ Ruth and Gordon Berger
- ◆ Sean Wierda
- ◆ Sebo Canada
- ◆ Seligman and Associates
- ◆ silverorange inc.
- ◆ Stephanie Roidi
- ◆ Storrington Lions Club
- ◆ Susan Gordin
- ◆ Susan Gottlieb
- ◆ Susan Wainstock

\$500 -
\$999

- ◆ TACC Developments
- ◆ The David Family Foundation
- ◆ The Azrieli Foundation
- ◆ The Henry and Berenice Kaufmann Foundation
- ◆ The McLean Foundation
- ◆ Cecile D`Cambre
- ◆ Chris Giffin
- ◆ David Rendeiro
- ◆ Davies Ward Phillips & Vineberg LLP
- ◆ Dawn Kelly
- ◆ Delaine Hampton
- ◆ Domenic Marando
- ◆ Echoage Inc.
- ◆ Iman Pour Navab
- ◆ Jerry Bates
- ◆ Jewish Foundation of Greater Toronto
- ◆ Jing Du
- ◆ Joel Puplamtu Mattias Residence for Children and Youth
- ◆ Katrina Cox-rainville
- ◆ L Pham Denistry

- ◆ The Veritas Foundation
- ◆ Tino Dos Santos
- ◆ Ullman Wealth Management Inc
- ◆ United Way Greater Toronto
- ◆ Vaughan Chamber of Commerce
- ◆ William Guth

- ◆ Leah Werry
- ◆ Liane Boyer
- ◆ Michael Shaw
- ◆ Miraj Hamman Spa
- ◆ Nadia Romano
- ◆ Park Thompson
- ◆ Paul Fenwick
- ◆ PayPal Giving Fund Canada
- ◆ Perola Kitchens And Interior Limited
- ◆ R. Judith Tobe
- ◆ RD Jeffrey Rogers Professional Corp.
- ◆ Rivalda Ceramic Tiles Inc.
- ◆ Robert Franklin
- ◆ Rocco Pantalone
- ◆ Sandy Goldman

\$250 -
\$499

- ◆ Andrea Matheson
- ◆ AYA at Princess Margaret Hospital
- ◆ Bernard DeAbreu
- ◆ Carolyn Piccinin
- ◆ Catherine Eustace
- ◆ Chelsea Khameraj
- ◆ ClickBid
- ◆ Clifton Prophet
- ◆ Cold Crowns
- ◆ Dave Lalonde
- ◆ Eric Vorauer
- ◆ Gaya Kathir
- ◆ GB Charities Aid Foundation
- ◆ James H. Kirk
- ◆ Jessica Portmann
- ◆ Karla Yakobi
- ◆ Katherine Yurkovich

- ◆ Keir McKenzie
- ◆ Lucy Baran
- ◆ Marcie Fisher
- ◆ Michael de Lellis
- ◆ Milestone Helpert Fund
- ◆ Molly Saunders
- ◆ Nick and Donna Stanoulis
- ◆ Nicola Family Foundation
- ◆ One Way Home Inc.
- ◆ Pauline DI Maria
- ◆ Rhonda Richer
- ◆ Russell Weiss
- ◆ Salvatore Mannella
- ◆ Stacey Hoffer
- ◆ Suzanne Laveau
- ◆ Tirone David
- ◆ Vince Agostino

Major in
Kind Gifts

- ◆ Air Canada Foundation
- ◆ Avid Apparel
- ◆ ESP Inc.
- ◆ Fairmont Hotels
- ◆ Labellium
- ◆ Motive Media

- ◆ PC Helpline
- ◆ SEBO Canada
- ◆ TOBEN Food by Design
- ◆ Toys for Tots
- ◆ YUMBA
- ◆ & many more!



La Fondation
Emmanuelle Gattuso



Waugh Family Foundation



Since 2009
Nankind has:

3,000+

families
supported

65,000+

meals delivered
to families facing
cancer



4,000+

children
empowered

100,000+

hours of free
childcare provided

nankind

Lessening the impact of
cancer on families

Charitable registration
Canada: 824863690RR0001
US: 82-1609421

1000 Sheppard Ave. W., Suite 100,
Toronto, ON
M3H 2T6
Canada

416-730-0025
info@nankind.com
Nankind.com

